

Anti-Shugoshin1 (*S. pombe*) antibody, rabbit polyclonal

Product code	63-154
Size	100 µl
Storage	-20°C
Concentration	0.2 mg/ml
Buffer	1 mg/ml BSA, 50% glycerol in PBS-
Purity	Purified IgG fraction with protein A from rabbit antiserum.
Immunogen	Recombinant Shugoshin 1 was used as immunogen for rabbit immunization and affinity purification.
Isotype	Rabbit IgG
Reactivity	<i>S. pombe</i> Shugoshin1 protein
Special notes	N/A
Application	1. Western blotting (1,000 fold dilution) 2. Immunofluorescence staining (100 fold dilution)
Background	Shugoshin 1 (Sgo1), a meiosis-specific protein, protects centromeric Rec8 from degradation during first meiotic division (meiosis I) in fission yeast <i>Schizosaccharomyces pombe</i> . This protein appears at late prophase of meiosis I and is degraded at anaphase I.
Data Link	UniProtKB Q9P7A0 (SGO1_SCHPO)
Please note: All products are FOR RESEARCH USE ONLY. NOT FOR USE IN DIAGNOSTIC PROCEDURES. NOT FOR MILITARY USE.	

Data Images: 63-154 Anti-Shugoshin1 (*S. pombe*) antibody, rabbit polyclonal

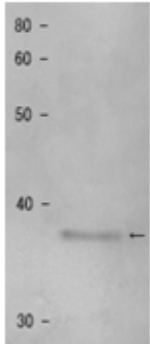


Fig.1 Detection of shugoshin 1 protein by Western blotting.

Sample: Extract of MP111 cells.

The antibody was diluted 1000 fold before use.

The 37 kD band corresponds to Shugoshin 1 protein.

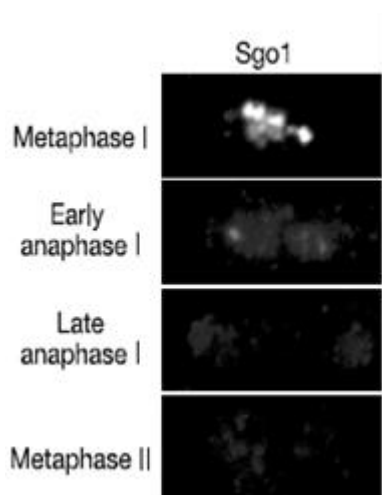


Fig.2 Immunostaining of Shugoshin 1 in synchronized diploid fission yeast.

Anti-Shugoshin 1 antibody was used as primary antibody and Alexa-488-conjugated anti-rabbit IgG was used as secondary antibody.

References: This product was used in references 2 and 3.

1. Watanabe Y and Kitajima TS “Shugoshin protects cohesion complexes at centromeres” *Philos Trans R Soc Lond B Biol Sci* **360**: 515-521 (2005) Review PMID: [15897177](https://pubmed.ncbi.nlm.nih.gov/15897177/)
2. Kitajima TS *et al* “The conserved kinetochore protein shugoshin protects centromeric cohesion during meiosis” *Nature* **427**: 510-517 (2004) PMID: [14730319](https://pubmed.ncbi.nlm.nih.gov/14730319/)
3. Yamagishi Y *et al* “Heterochromatin links to centromeric protection by recruiting shugoshin”

Nature **455**: 251-255 (2008) PMID: [18716626](#)

Related Products:

63-101 Anti-Swi6 (*S. pombe*) antibody, rabbit serum