

Anti-Spt3 (*S. cerevisiae*) antibody, rabbit serum

Product code	62-005
Size	100 µl
Storage	Store at 4°C for short term. For long term storage store at -20°C. Aliquot to avoid repeated freezing and thawing.
Concentration	N/A
Buffer	0.1% sodium azide
Purity	Rabbit antiserum
Immunogen	Recombinant His-tagged <i>S. cerevisiae</i> Spt3 (1-200 aa)
Isotype	Rabbit IgG
Reactivity	<i>S. cerevisiae</i> Spt3 protein. Not tested with other species.
Special notes	N/A
Application	1. 1.Western blotting (1/2,000-1/5,000). 2. 2. ELISA
Background	Spt3 is a subunit of the SAGA and SAGA-like transcriptional regulatory complexes; interacts with Spt15p to activate transcription of some RNA polymerase II-dependent genes, also functions to inhibit transcription at some promoters; relocalizes to the cytosol in response to hypoxia.
Data Link	SGD SPT3/YDR392W UniProtKB P06844 (SPT3_YEAST)
Please note: All products are FOR RESEARCH USE ONLY. NOT FOR USE IN DIAGNOSTIC PROCEDURES. NOT FOR MILITARY USE.	

Data Images: 62-005 Anti-Spt3 (*S. cerevisiae*) antibody, rabbit serum

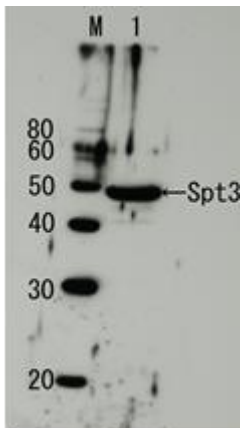


Fig.1 Detection of endogenous Spt3 by Western blotting using the Spt3 antibody.

Lane1: Extract of budding yeast

The antiserum was diluted 5,000 fold before use.

References: This antibody was used in the following publications.

1. Takahata S et al “Autonomous function of the amino-terminal inhibitory domain of TAF1 in transcriptional regulation“ *Mol Cell Biol* **24**: 3089 -3099 (2004) PMID: [15060133](#) **WB**
2. Takahashi H et al. *Saccharomyces cerevisiae* Med9 comprises two functionally distinct domains that play different roles in transcriptional regulation. *Genes Cells*. 2009 Jan;14(1):53-67. **WB**