

Anti-Gal 11 (*S. cerevisiae*) antibody, rabbit serum

Product code	62-001
Size	100 µl
Storage	Store at 4°C for short term. For long term storage store at -20°C. Aliquot to avoid repeated freezing and thawing.
Concentration	N/A
Buffer	0.09% sodium azide
Purity	Rabbit antiserum
Immunogen	Recombinant of <i>S. cerevisiae</i> Gal11 protein (1-300aa) expressed in <i>E. coli</i> .
Isotype	Rabbit IgG
Reactivity	<i>S. cerevisiae</i> Gal 11 protein
Special notes	N/A
Application	1. Western blotting.(1/500). Not tested for other applications
Background	Mediator is a protein complex which performs a very important role both in the transcription at the basal level which does not rely on transcription control factor, and in the transcription activating reaction that relies on the transcription control factor. It has the characteristic of binding to the 7 amino acid repeated structure (CTD) that exists in the C terminal of the biggest subunit of RNA polymerase II. 30 kinds of subunits have already being identified as its composing substances, but it is said that multiple kinds of complexes with various subunit compositions exist in the cells. Gal11p is one of the mediator subunits and is composed of 1081 amino acid residues (120 kDa).
Data Link	SGD GAL11/YOL051W UniProtKB P19659 (MED15_YEAST)
Please note: All products are FOR RESEARCH USE ONLY. NOT FOR USE IN DIAGNOSTIC PROCEDURES. NOT FOR MILITARY USE.	

Data Images: 62-001 Anti-Gal 11 (*S. cerevisiae*) antibody, rabbit serum

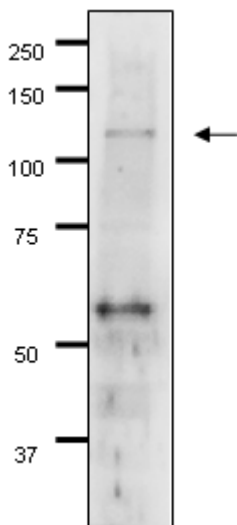


Fig.1 Detection of Gal 11p by Western blotting using the Gal11p antibody in the whole cell extract of *S. cerevisiae*.

The antiserum was used at 1/500 dilution.

7.5% gradient gel was used and wet system was used for blotting.

References: This antibody has not been referenced in publication.