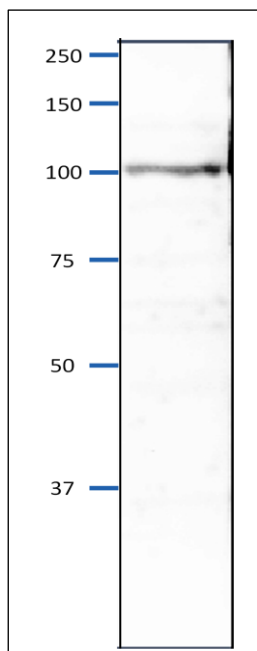


## Anti-Orc4 (*S. pombe*) antibody, rabbit polyclonal

<b>Product code</b>	63-043
<b>Size</b>	100 µg
<b>Storage</b>	-20°C
<b>Concentration</b>	2.0 mg/ml
<b>Buffer</b>	PBS <sup>-</sup> with 50% glycerol
<b>Purity</b>	Purified IgG fraction with protein A from rabbit antiserum.
<b>Immunogen</b>	Recombinant His6 - Orc4 (1-329 amino acids) of <i>S. pombe</i> .
<b>Isotype</b>	Rabbit IgG
<b>Reactivity</b>	<i>S. pombe</i> Orc4 protein
<b>Special notes</b>	N/A
<b>Application</b>	<ol style="list-style-type: none"> <li>1. Western blot (1/2,000 dilution)</li> <li>2. Immunoprecipitation (1/200)</li> <li>3. Chromatin Immunoprecipitation (Assay dependent)</li> </ol>
<b>Background</b>	<p>Component of the origin recognition complex (ORC) that binds origins of replication. It has a role in both chromosomal replication and mating type transcriptional silencing. ORC binds to multiple sites within the ars1 origin of DNA replication in an ATP-independent manner. This binding is mediated by the N-terminal A.T hook repeats of Orc4. (Calculated Molecular Mass: 108.6 kDa).</p> <p><b>Subcellular location:</b> Nucleus</p>
<b>Data Link</b>	UniProtKB <a href="#">Q9Y794</a> ( <i>S. pombe</i> Orc4)
Please note: All products are FOR RESEARCH USE ONLY. NOT FOR USE IN DIAGNOSTIC PROCEDURES. NOT FOR MILITARY USE.	

**Data Images:** 63-043 Anti-Orc4 (*S. pombe*) antibody, rabbit polyclonal



**Fig.1 Western blot of Orc4 protein in *S. pombe* crude extract**

Sample: *S. pombe* crude extract, 8  $\mu$ g

Anti-Orc4 antibody was used at 1/2000 dilution. Second antibody (goat anti-rabbit IgG antibody, HRP-conjugated, ab97051) was used at 1/10,000 dilution.

**References:** This product has been used in the following publications.

1. Takahashi T et al. Multiple ORC-binding sites are required for efficient MCM loading and origin firing in fission yeast. EMBO J. 2003, Feb;22 (4): 964-74. PMID: [12574132](https://pubmed.ncbi.nlm.nih.gov/12574132/). ChIP, IP, ; *S. pombe*

**Related Products:**

- 63-020 Anti-Mcm2 (*S. pombe*) antibody
- 63-021 Anti-Mcm3 (*S. pombe*) antibody
- 63-022 Anti-Mcm5 (*S. pombe*) antibody
- 63-023 Anti-Mcm6 (*S. pombe*) antibody
- 63-024 Anti-Mcm7 (*S. pombe*) antibody
- 63-030 Anti-Psf1 (*S. pombe*) antibody
- 63-032 Anti-Psf3 (*S. pombe*) antibody
- 63-035 Anti-Sld5 (*S. pombe*) antibody
- 63-037 Anti-Ssb2 / Rpa2 (*S. pombe*) antibody
- 63-041 Anti-Orc2 (*S. pombe*) antibody