

Anti-Mcm3 (*S. pombe*) antibody, rabbit serum

Product code	63-021
Size	100 µl
Storage	Store 4°C for short term For long term storage store at -20°C. Aliquot to avoid repeated freezing and thawing.
Concentration	N/A
Buffer	0.09% sodium azide
Purity	Rabbit antiserum
Immunogen	Recombinant His6- Mcm3 (1-217 amino acids) of <i>S. pombe</i>
Isotype	Rabbit IgG
Reactivity	<i>S. pombe</i> Mcm3 protein
Special notes	N/A
Application	1. Western blotting (1/ 1000-1/2000)
Background	Mcm3 acts as a component of mcm2-7 complex which is the putative replicative helicase essential for 'once per cell cycle' DNA replication initiation and elongation in eukaryotic cells. (Mass: 97.5 kDa).
Data Link	UniProtKB 30666 (<i>S. pombe</i> Mcm3)
Please note: All products are FOR RESEARCH USE ONLY. NOT FOR USE IN DIAGNOSTIC PROCEDURES. NOT FOR MILITARY USE.	

Data Images: 63-021 Anti-Mcm3 (*S. pombe*) antibody, rabbit serum

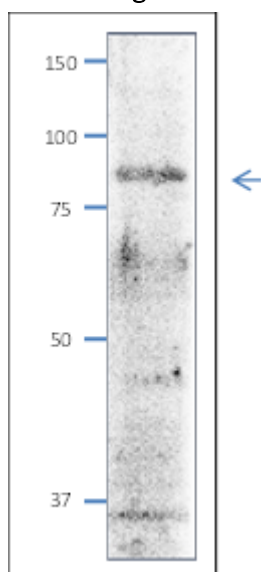


Fig.1 Western blot of Mcm3 protein in *S. pombe* crude extract

Anti-Mcm3 antibody was used at 1/2000 dilution. Second antibody (goat anti-rabbit IgG antibody, HRP-conjugated, ab97051) was used at 1/10,000 dilution. *S. pombe* extract, 8 µg.

Reference : This antibody has not been yet in publication.

Related Products:

- 63-020 Anti-Mcm2 (*S. pombe*) antibody
- 63-022 Anti-Mcm5 (*S. pombe*) antibody
- 63-023 Anti-Mcm6 (*S. pombe*) antibody
- 63-024 Anti-Mcm7 (*S. pombe*) antibody
- 63-030 Anti-Psf1 (*S. pombe*) antibody
- 63-032 Anti-Psf3 (*S. pombe*) antibody
- 63-035 Anti-Sld5 (*S. pombe*) antibody
- 63-037 Anti-Ssb2 / Rpa2 (*S. pombe*) antibody
- 63-041 Anti-Orc2 (*S. pombe*) antibody
- 63-043 Anti-Orc4 (*S. pombe*) antibody
- 63-050 Anti-Cdc45 Sna41 (*S. pombe*) antibody