

Anti- His6 tag antibody, rabbit serum

Product code	60-051
Size	100 µl
Storage	Store at 4°C for short term. For long term storage store at -20°C. Aliquot to avoid repeated freezing thawing.
Concentration	N/A
Buffer	0.05% sodium azide
Purity	Rabbit antiserum
Immunogen	GSHHHHHHGCG synthetic peptide cross-linked to KLH with C-terminal Cystein
Isotype	Rabbit IgG
Reactivity	His6-tagged fusion proteins
Special notes	N/A
Application	1. Western blotting (dilution: 1/1,000) 2. ELISA (assay dependent) Not good for immunoprecipitation. Other applications have not been tested.
Background	Epitope tagging has become a powerful tool for detection and purification of expressed proteins. His6-epitope tag is especially useful because the tagged recombinant proteins can be easily purified by affinity chromatography with metal ion (e.g. Ni ²⁺ , Co ²⁺ etc.) conjugated resins. Due to their small size, His epitope tag does not affect the tagged protein's biochemical properties in most cases. Anti-His epitope tag antibody is useful for identification of a recombinant protein tagged with 6X His at N-terminal, C-terminal and internal of the proteins.
Data Link	N/A
Please note: All products are FOR RESEARCH USE ONLY. NOT FOR USE IN DIAGNOSTIC PROCEDURES. NOT FOR MILITARY USE.	

Data Images: 60-051 Anti- His6 tag antibody, rabbit serum

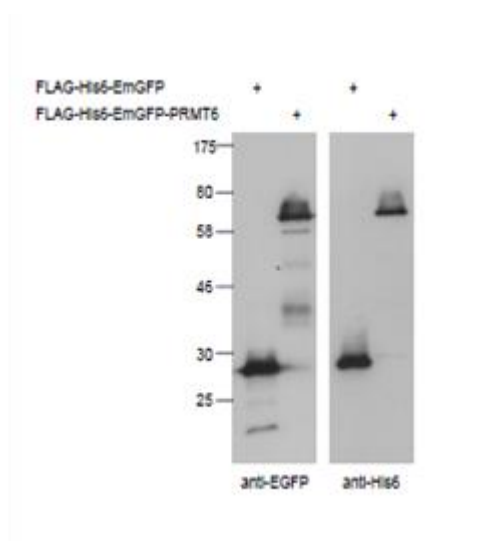


Fig.1 WB analysis for His6

Detection of His-tagged proteins (FLAG-His6-EmGFP, FLAG-His6-EmGFP-PRMT6) in crude extract of 293T cells expressing the recombinant proteins with anti-EGFP antibody (left panel,) and anti-His6 antibody (right panel). The antibodies were used at 1,000 fold dilution.

Reference: Simpson RJ, Adams PD and Golemis EA “ Basic Methods in Protein Purification and Analysis.A laboratory Manual” ColdSpring Harbor Laboratory Press (2009) New York