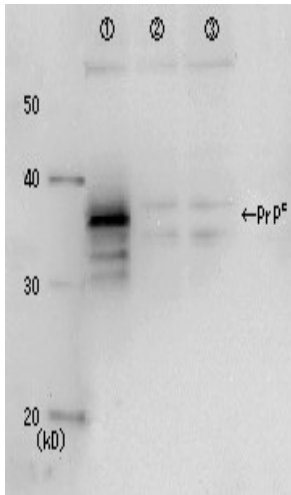


## Anti-Prion protein antibody, mouse monoclonal (2C5-5)

<b>Product code</b>	65-901
<b>Size</b>	50 µg
<b>Storage</b>	-20°C
<b>Concentration</b>	1.0 mg/ml
<b>Buffer</b>	PBS- with 50% glycerol
<b>Purity</b>	Purified IgG fraction with protein A from hybridoma cell culture medium.
<b>Immunogen</b>	Recombinant human PrP lacking GPI anchor expressed and purified from rabbit kidney cell line RK13.
<b>Isotype</b>	Mouse IgG1κ
<b>Reactivity</b>	Reacts with human Prion but not with mouse Prion. Other species have not been tested.
<b>Special notes</b>	N/A
<b>Application</b>	1. Western blotting (~0.5 µg/ml) 2. ELISA (most suitable) Other applications have not been tested.
<b>Background</b>	<p>Prion protein PrP is a membrane glycosylphosphatidylinositol(GPI) anchored glycoprotein highly expressed in neuron and glia cells as well as immune and reproductive cells. Mutations in the octapeptide repeat regions as well as elsewhere in this gene have been associated with neurodegenerative diseases such as Creutzfeldt Jakob disease, fatal familial insomnia, Gerstmann Straussler disease, Huntington disease like 1, and kuru. The infectious isoform of PrP<sup>C</sup>, known as PrP<sup>Sc</sup>, is able to convert normal PrP<sup>C</sup> proteins into the infectious isoform, which is insoluble amyloid aggregate, by changing their conformation (1).</p> <p>Mature PrP protein in human consists of 209 amino acids. Several topological forms exist; one cell surface form anchored via glycolipid and two transmembrane forms, therefore multiple bands are observed in SDS-PAGE (Fig 1).</p> <p>The hybridoma clone 2C5-5 was established in the laboratory of Prof. K. Ikuta at Osaka University.</p>
<b>Data Link</b>	UniProtKB/Swiss-Prot <a href="#">P04156</a> (PRIO_HUMAN)
Please note: All products are FOR RESEARCH USE ONLY. NOT FOR USE IN DIAGNOSTIC PROCEDURES. NOT FOR MILITARY USE.	

**Data Images:** 69-901 Anti-Prion protein antibody, mouse monoclonal (2C5-5)



**Fig.1 Identification of Prion protein in crude cell extract by Western blotting using the monoclonal antibody 2C5-5.**

Lane 1: Extract of rabbit kidney cells RK13 over-expressing prion protein

Lane 2: Negative control; extract of the vector infected cells

Lane 3: Negative control; extract of RK13 cells

**Reference:**

1. Sakudo A *et al* "Recent developments in prion disease research: diagnostic tools and in vitro cell culture models" *J Vet Med Sci* 69:329-337 (2007) Review PMID: [17485919](https://pubmed.ncbi.nlm.nih.gov/17485919/)

**Related Products**

65-903 Anti-Prion protein antibody, mouse monoclonal (7A1)