

Anti *Campylobacter* outer-membrane protein antibody, mouse monoclonal (cc-02)

Product code	64-103
Size	100 µg
Storage	-20°C
Concentration	1.0 mg/ml
Buffer	PBS ⁻ with 50% glycerol
Purity	Purified with Ab-Capture for IgM (ProteNova, Japan)
Immunogen	Crude extract of <i>Campylobacter coli</i> (<i>C. coli</i>)
Isotype	mouse IgM
Reactivity	Reacts with outer-membrane protein of <i>C. coli</i> and <i>C. jejuni</i>
Validation	Specificity has been validated by western blotting
Application	Western blotting: x1/200-400
Background	<p><i>Campylobacter coli</i> (<i>C. coli</i>) is one of the major causative agents of food poisoning as well as <i>C. jejuni</i>. The studies of <i>Campylobacter spp.</i> major outer membrane protein (MOMPs) antigens have been reported. The MOMPs of <i>Campylobacter spp.</i> are important components of the cell envelope. Many gram-negative bacteria have one or more predominant MOMPs. Being a major component of the bacterial outer membrane, MOMP is an immunodominant protein and makes an attractive target antigen. It was reported that a monoclonal antibody (MAb) specific for the MOMP protein of <i>Campylobacter spp.</i> recognized major antigen of approximately ~46kDa (~425 amino acid) in extracts from <i>Campylobacter spp.</i>.</p>
Data Link	UniProtKB: AOA5Y9JRQ7_CAMCO
<p>Please note: All products are FOR RESEARCH USE ONLY. NOT FOR USE IN DIAGNOSTIC PROCEDURES. NOT FOR MILITARY USE.</p>	

Data Images: 64-103 Anti *Campylobacter* outer-membrane protein antibody, mouse monoclonal (cc-02)

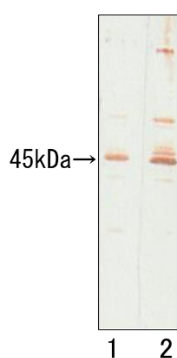


Fig.1. Detection of polypeptides of *Campylobacter* by Western blotting (WB) with cc-02.

The lysate of crude extract of (1) *C. coli* and (2) *C. jejuni* were applied to WB. The antibody was used at 1/200 dilution. The HRP-conjugated goat anti-mouse IgM was used at 1/4,000 as the second and visualized by DAB (3,3'-Diaminobenzidine). The cc-02 recognized major antigen of approximately 44-45kDa in extracts from *C. coli* and *C. jejuni*.

Table 1. Reactivity of cc-02 antibody

	ELISA	WB (kDa)
<i>Campylobacter coli</i> (JCM2013)	+	44-45K
<i>Campylobacter jejuni</i> (JCM2529)	+	44K
<i>Escherichia coli</i>	-	-
<i>Salmonella enteritidis</i>	-	-
<i>Helicobacter pylori</i> (JCM12093)	-	-

Related products:

64-102 Anti-*Campylobacter* (Porin) antibody, mouse monoclonal (cj-01)

References This antibody has not yet been used in publication.