

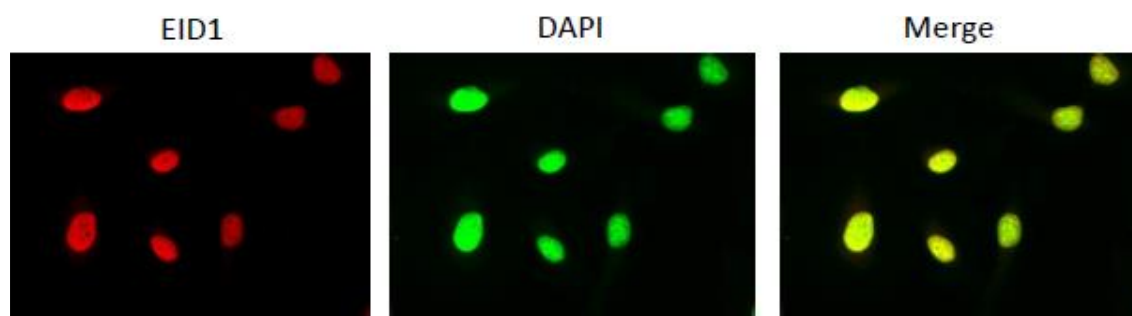
## Anti-EID1 antibody, mouse monoclonal (#26)

<b>Product code</b>	71-185
<b>Size</b>	100 µg
<b>Storage</b>	-20°C
<b>Concentration</b>	1.0 mg/ml
<b>Buffer</b>	PBS <sup>-</sup> with 50% glycerol
<b>Purity</b>	Purified IgG fraction with protein A from hybridoma cell culture medium.
<b>Immunogen</b>	Synthetic peptide containing amino acids 159-187 of human EID1 protein
<b>Isotype</b>	Mouse IgG2aκ
<b>Reactivity</b>	Human and mouse EID1 protein. Not tested for other species.
<b>Special notes</b>	Immunogen peptide contains the same sequence in mouse EID1
<b>Application</b>	1. Western blotting (~1 µg/ml). 2. Immunofluorescence staining (~1 µg/ml). Other applications have not been tested.
<b>Background</b>	<i>EID1</i> (EP300 interacting inhibitor of differentiation 1) encodes a 21 kDa protein, which interacts with RB1 and EP300 and acts as a repressor of MYOD1 transcription. EID1 inhibits EP300 and CBP histone acetyltransferase activity. It may be involved in coupling cell cycle exit to the transcription of genes required for cellular differentiation.
<b>Data Link</b>	UniProtKB/Swiss-Prot <a href="#">Q9Y6B2</a> (EID1_HUMAN)
Please note: All products are FOR RESEARCH USE ONLY. NOT FOR USE IN DIAGNOSTIC PROCEDURES. NOT FOR MILITARY USE.	

**Data Images:** 71-185 Anti-EID1 antibody, mouse monoclonal (#26)



**Fig 1 Identification of the EID1 protein by the monoclonal antibody clone #26 by Western blotting.** Crude cell extracts of MCF7 cells (breast cancer cell line) transfected with control vector pCMV1 (lane 1) or the EID1 expression vector pcDNA3/EID1 (lane 2) were analyzed by Western blotting using anti-EID1 antibody clone #26 as the primary antibody and HRP-conjugated-mouse IgG as the secondary antibody. The EID1 protein was identified as a 21 kDa protein band as shown by an arrow.



**Fig. 2. Immunofluorescent staining of EID1 protein by anti-EID1 antibody (clone 26) in HeLa cells. EID1 protein is localized in nuclei.**

Hela cells grown

Fixation of the cells in 4% paraformaldehyde over night

Permeabilization in 0.25% Triton X-100/PBS<sup>-</sup> for 10 min

Blocking in 1.5% BSA/PBS for 30 min

Incubation over night in anti-EID1 antibody (clone 2) diluted to 1/1,000 by blocking buffer

Incubation for 60min in 2<sup>nd</sup> antibody, Goat anti-rabbit IgG conjugated with Alex 488 (1:1,000 dilution)

Nuclei were stained with DAPI

**References:** This antibody has not yet been used in publication

**Related Product**

71-190 Anti-EID1 antibody, mouse monoclonal (#2)