

Anti-GFP antibody, rabbit serum

Product code	60-011
Size	100 µl
Storage	Store at 4°C for short term. For long term storage store at -20°C. Aliquot to avoid repeated freezing thawing.
Concentration	N/A
Buffer	0.05% sodium azide
Purity	Rabbit antiserum
Immunogen	Recombinant His-tagged EGFP
Isotype	Rabbit IgG
Reactivity	Reactive to all variants of <i>Aequorea victoria</i> GFP such as S65T-GFP, RS-GFP, YFP, EGFP, and their-fusion proteins
Special notes	N/A
Application	1. Western blotting (dilution: 1/2,000) 2. Immunoprecipitation (assay dependent) 3. Immunofluorescence/Immunohistochemistry (1/4,000)
Background	The green fluorescent protein (GFP) is composed of 238 amino acids (26.9 kDa), originally isolated from the jellyfish <i>Aequorea victoria</i> that fluoresces green when exposed to blue light. In cell and molecular biology, the GFP fused gene is frequently used as a reporter of expression and protein localization.
Data Link	UniProtKB P42212 (GFP_AEQVI)
Please note: All products are FOR RESEARCH USE ONLY. NOT FOR USE IN DIAGNOSTIC PROCEDURES. NOT FOR MILITARY USE.	

Data Images: 60-011 Anti-GFP antibody, rabbit serum

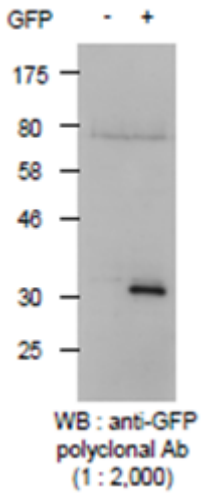


Fig.1 Detection of GFP protein with this antibody by Western blotting.

- : Lysate of 293T cells transfected with an empty vector

+ : Lysate of 293T cells transfected with the plasmid carrying the GFP gene

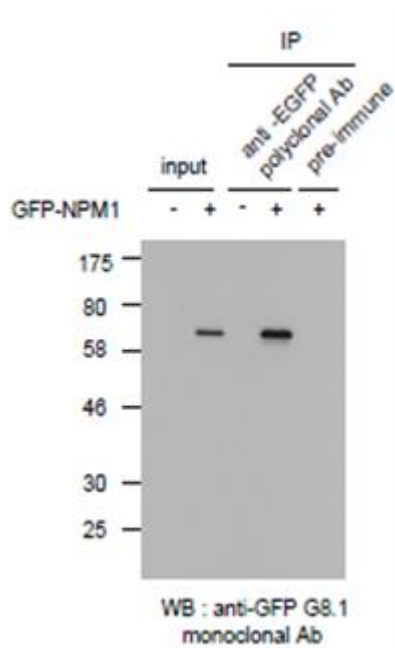


Fig.2 Immunoprecipitation of GFP-tagged protein with this antibody followed by Western blotting.

- : Lysate of 293T cells transfected with an empty vector

+ : Lysate of 293T cells transfected with the plasmid carrying the GFP-tagged NPM1 gene

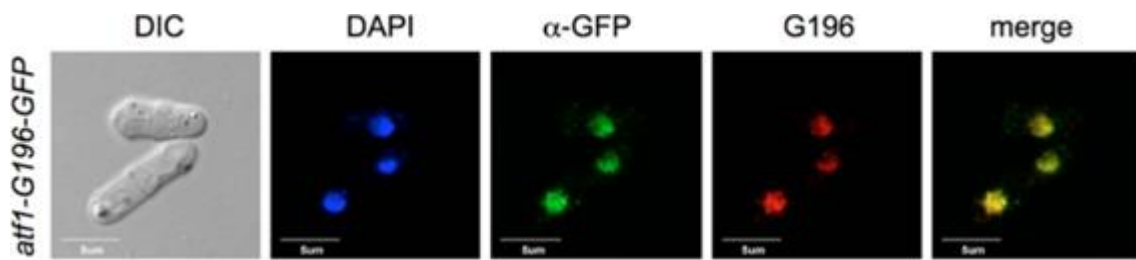


Fig 3. Immunofluorescence of GFP- and G196-tagged nuclear protein in fission yeast cells. Atf1-G196-GFP expressing cells were fixed and incubated with mAb G196 and anti-GFP polyclonal Ab (BioAcademia 60-011), then stained with Alexa-594 anti-mouse and Alexa-488 anti-rabbit secondary antibodies. (This figure is taken from Fig 5 of Tatsumi et al, [Sci Rep.](#) 2017 Mar 7;7:43480 as cited in Reference)

Related Product:

60-001 anti-GFP antibody, rat monoclonal (1A5)

References: This antibody was used in the following publication.

Tatsumi K et al, G196 epitope tag system: a novel monoclonal antibody, G196, recognizes the small, soluble peptide DLVPR with high affinity. [Sci Rep.](#) 2017 Mar 7;7:43480. PMID: [28266535](#). **WB, IF**