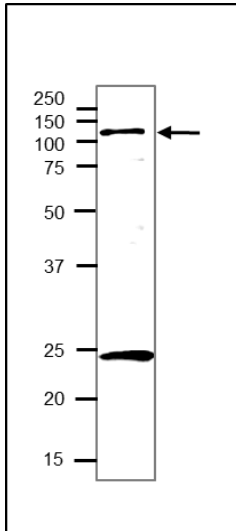


## Anti-NAI2 C-terminal (At) antibody, rabbit polyclonal

<b>Product code</b>	81-104
<b>Size</b>	200 µg
<b>Storage</b>	-20°C
<b>Concentration</b>	2.0 mg/ml
<b>Buffer</b>	PBS <sup>-</sup> with 50% glycerol
<b>Purity</b>	Purified IgG fraction with protein A from rabbit antiserum.
<b>Immunogen</b>	Recombinant His6-tagged C-terminal of NAI2 (amino acids 636-772) ( <i>A. thaliana</i> ).
<b>Isotype</b>	Rabbit IgG
<b>Reactivity</b>	NAI2 protein of Arabidopsis thaliana. Not tested in other species.
<b>Special notes</b>	N/A
<b>Application</b>	1. Western blotting (1/2,000 – 1/4,000)
<b>Background</b>	<p>Responsible for the ER body formation. Regulates the number and shape of the ER bodies and the accumulation of PYK10 in ER bodies, but is not involved in the expression of PYK10. Interacts directly or indirectly with MEB1 and MEB2.</p> <p>Expressed in roots. Detected in shoot apex. Induced by NAI1. Length: 772 amino acids.</p> <p>Predicted molecular mass: 85,016</p> <p><b>Subcellular location:</b> Endoplasmic reticulum lumen.</p>
<b>Data Link</b>	UniProtKB <a href="#">Q9LSB4</a> (NAI2_ARATH)
Please note: All products are FOR RESEARCH USE ONLY. NOT FOR USE IN DIAGNOSTIC PROCEDURES. NOT FOR MILITARY USE.	

**Data Images:** 81-104 Anti-NAI2 C-terminal (At) antibody, rabbit polyclonal



**Fig.1 Western Blot of NAI2 in extract of arabidopsis seedling**

Crude extract of 7day old seedling of *Arabidopsis thaliana* was run on 12.5% SDS-PAGE and blotted overnight to PVDF membrane by wet system. Blocking was done with 3% skim milk. Anti-NAI2 antibody (C-terminal) was used at 1/2,000 dilution. Secondary antibody (goat anti-rabbit IgG antibody HRP-conjugated, ab97051) was used at 1/10,000 dilution.

**Reference:** This antibody has been described and used in the following publication.

1. Yamada K et al. NAI2 is an endoplasmic reticulum body component that enables ER body formation in *Arabidopsis thaliana*. [Plant Cell](#). 2008 Sep;20(9):2529-40. PMID: [18780803](#) **WB (arabidopsis)**

#### Related Products

- 81-101 Anti-MEB1 (At) antibody, rabbit polyclonal
- 81-102 Anti-MEB2 (At) antibody, rabbit polyclonal
- 81-103 Anti-NAI2 ΔSP (At) antibody, rabbit polyclonal