

Anti-SLC2A3 / GLUT3 antibody, rat monoclonal (#10)

Product code	74-200
Size	100 µg
Storage	-20°C
Concentration	1.0 mg/ml
Buffer	PBS ⁻ with 50% glycerol
Purity	Purified IgG fraction with protein A from hybridoma cell culture medium.
Immunogen	Mouse sperm
Isotype	Rat IgG2a κ
Reactivity	Mouse SLC2A3/GLUT3
Special notes	N/A
Application	1. Western blotting (1/200-1/500)
Background	<p>SLC2A3 is facilitative glucose transporter that can also mediate the uptake of various other monosaccharides across the cell membrane. Mediates the uptake of glucose, 2-deoxyglucose, galactose, mannose, xylose and fucose, and probably also dehydroascorbate. Does not mediate fructose transport.</p> <p>Function: Facilitative glucose transporter. Probably a neuronal glucose transporter. Abundant in sperm tail.</p> <p>Molecular mass: 53,479 with 493 amino acids.</p>
Data Link	UniProtKB P32037 (GTR3_MOUSE)
Please note: All products are FOR RESEARCH USE ONLY. NOT FOR USE IN DIAGNOSTIC PROCEDURES. NOT FOR MILITARY USE.	

Data Images: 74-200 Anti-SLC2A3 / GLUT3 antibody, rat monoclonal (#10)



Fig.1 Western blotting of SLC2A3 protein in mouse sperm. The antibody was used at 1/500 dilution. Note that SLC2A3 is abundantly expressed in sperm.

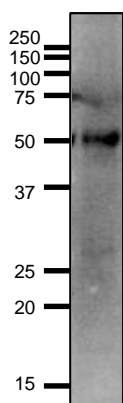


Fig.2 Western blotting of SLC2A3 protein in mouse testis. Antibody was used at 1/500 dilution. Expression level of SLC2A3 in testis is much less than in sperm.

Reference: This antibody has been used in the following publication.

1. Fujihara Y. et al. Expression of TEX101, regulated by ACE, is essential for the production of fertile mouse spermatozoa. [Proc Natl Acad Sci U S A](#). 2013 May 14;110(20):8111-6. doi: 10.1073/pnas.1222166110. **WB**