

Anti-Tem1(*S. cerevisiae*) antibody, rabbit polyclonal

Product code	62-215
Size	100 µl
Storage	-20°C
Concentration	N/A
Buffer	1 mg/ml BSA, 0.09 % sodium azide and 50% glycerol in PBS-
Purity	IgG fraction purified with recombinant Tem1 after adsorption of anti-GST antibody with GST affinity column.
Immunogen	GST-full length Tem1 fusion protein expressed in <i>E. coli</i>
Isotype	Rabbit IgG
Reactivity	<i>S. cerevisiae</i> Tem1 protein Not tested with other species.
Special notes	N/A
Application	1. Western blotting (1/250-1/500) 2. Immunoprecipitation Not tested for other applications
Background	Tem1 is a low-molecular-weight GTP-binding protein (GTPase) which is required for the termination of M phase in cell division. The defect of Tem1 was lethal, and the Tem1 -defective cells were arrested at telophase with high H1-kinase activity, indicating that Tem1 is required to exit from M phase. The defect of Tem1 was suppressed by a high dose of <i>cdc15</i> , which encodes a protein kinase. Tem1 functions upstream of <i>cdc15</i> kinase and may be required to activate the <i>cdc15</i> protein kinase pathway. A cascade consisting of Tem1 and kinases act to terminate mitosis.
Data Link	SGD TEM1/YML064C
Please note: All products are FOR RESEARCH USE ONLY. NOT FOR USE IN DIAGNOSTIC PROCEDURES. NOT FOR MILITARY USE.	

Data Images: 62-215 Anti-Tem1 (*S. cerevisiae*) antibody, rabbit polyclonal

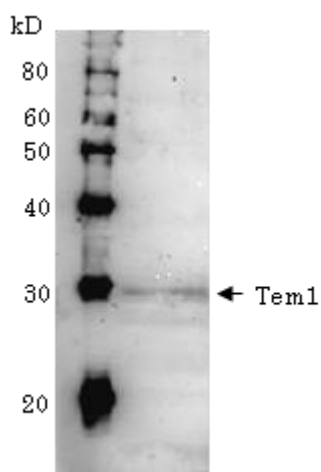


Fig.1 Detection of Tem1 (28kDa) in the crude extract of *S. cerevisiae* by Western blotting using this antibody.

Reference:

1. Shirayama M *et al* "The yeast TEM1 gene, which encodes a GTP-binding protein, is involved in termination of M phase." *Mol Cell Biol* **14**, 7476-7482 (1994) PMID: [7935462](#)
2. Shou W *et al* "Exit from mitosis is triggered by Tem1- dependent release of protein phosphatase Cdc14 from nucleolar RENT complex." *Cell* **97**:233-244 (1999) PMID: [10219244](#)
3. Lippincott J *et al* "The Tem1 small GTPase controls actomyosin and septin dynamics during cytokinesis." *J Cell Sci* **114**:1379-1386 (2001) PMID: [11257003](#)

Related products:

- 62-200 anti-Rpn1 (*S. cerevisiae*) antibody, rabbit serum
- 62-201 anti-Rpn3 (*S. cerevisiae*) antibody, rabbit polyclonal
- 62-203 anti-Rpn5 (*S. cerevisiae*) antibody, rabbit polyclonal
- 62-205 anti-Rpn7 (*S. cerevisiae*) antibody, rabbit polyclonal
- 62-207 anti-Rpn9 (*S. cerevisiae*) antibody, rabbit polyclonal
- 62-209 anti-Rpn12 (*S. cerevisiae*) antibody, rabbit polyclonal
- 62-211 anti-Nob1 (*S. cerevisiae*) antibody, rabbit polyclonal
- 62-213 anti-Nas6/p28 (*S. cerevisiae*) antibody, rabbit polyclonal