

Anti-Rpn9(*S. cerevisiae*) antibody, rabbit polyclonal

Product code	62-207
Size	100 µl
Storage	-20°C
Concentration	N/A
Buffer	1 mg/ml BSA, 0.09 % sodium azide and 50% glycerol in PBS-
Purity	IgG fraction purified with affinity chromatography from rabbit antiserum
Immunogen	Recombinant yeast Rpn9 expressed in <i>E. coli</i> (Ref. 2)
Isotype	Rabbit IgG
Reactivity	<i>S. cerevisiae</i> Rpn9 protein Not tested with other species.
Special notes	N/A
Application	1. Western blotting (1/5000-1/10000) 2. Immunoprecipitation Not tested for other applications
Background	<p>The 26 S proteasome is a protein complex with a molecular mass of ~2,000 kDa. It is essential not only for eliminating damaged or misfolded proteins but also for degrading short lived regulatory proteins involved in cell cycle regulation, DNA repair, signal transduction, apoptosis, and metabolic regulation (ref.1). The 26S proteasome is composed of the 20S core particle (CP) and the 19S regulatory particle (RP). The RP is further subdivided into lid and base sub-complexes. Rpn9 is one of the non-ATPase subunits of lid. Rpn9 plays a key role in facilitating the assembly of the 26S.</p> <p>proteasome or in stabilizing the structure of the 26S proteasome. Rpn9 null mutant is temperature sensitive and exhibits cell cycle and proteasome assembly defects.</p>
Data Link	SGD RPN9/YDR427W
Please note: All products are FOR RESEARCH USE ONLY. NOT FOR USE IN DIAGNOSTIC PROCEDURES. NOT FOR MILITARY USE.	

Data Images: 62-207 Anti-Rpn9 (*S. cerevisiae*) antibody, rabbit polyclonal

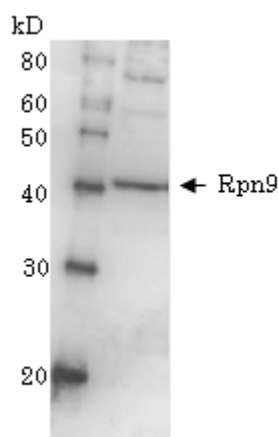


Fig.1 Detection of Rpn9 (46kDa) in the crude extract of *S. cerevisiae* by Western blotting using this antibody.

Reference: This antibody has been used in the following publication.

Takeuchi J *et al* "Rpn9 is required for efficient assembly of the yeast 26S proteasome." *Mol Cell Biol* 19:6575-6584 (1999) PMID: [10490597](https://pubmed.ncbi.nlm.nih.gov/10490597/) **WB**

Related products:

- 62-200 anti-Rpn1 (*S. cerevisiae*) antibody, rabbit serum
- 62-201 anti-Rpn3 (*S. cerevisiae*) antibody, rabbit polyclonal
- 62-203 anti-Rpn5 (*S. cerevisiae*) antibody, rabbit polyclonal
- 62-205 anti-Rpn7 (*S. cerevisiae*) antibody, rabbit polyclonal
- 62-209 anti-Rpn12 (*S. cerevisiae*) antibody, rabbit polyclonal
- 62-211 anti-Nob1 (*S. cerevisiae*) antibody, rabbit polyclonal
- 62-213 anti-Nas6/p28 (*S. cerevisiae*) antibody, rabbit polyclonal
- 62-215 anti-Tem1 (*S. cerevisiae*) antibody, rabbit polyclonal