

Anti-HP1 α /CBX5 antibody, rabbit polyclonal

Product code	70-221
Size	50 μ g
Storage	-20°C
Concentration	0.37 mg/ml
Buffer	0.12 M sodium phosphate buffer (pH 7.4) with 50% glycerol
Purity	Purified IgG fraction with protein A from rabbit antiserum.
Immunogen	he synthetic peptide CEDAENKEKETAKS corresponding to the amino acid sequence 179-191 of human HP1 α
Isotype	Rabbit IgG
Reactivity	Human. Not tested with other species.
Special notes	N/A
Application	1. Western blotting (\sim 1/1,000 dilution) 2. ELISA
Background	<p>Heterochromatin protein 1 (HP1) is a major component of heterochromatin and plays a role in assembly of various proteins on chromatin and gene silencing. The HP1 family is evolutionally conserved, with members in fungi, plants and animals but not prokaryotes, and there are multiple members within the same species. The HP1 family proteins are encoded by a class of genes known as the chromobox (CBX) genes. In humans, HP1α is encoded by the <i>Chromobox homolog 5</i> (CBX5) gene located on chromosome 12q13.13. HP1α has been observed to interact directly or indirectly with several non-histone proteins with a wide variety of functions (Ref.1).</p> <p>The product is prepared by immunizing rabbit with the synthetic peptide CEDAENKEKETAKS corresponding to the amino acid sequence 179-191 of human HP1α and purified by affinity purification with the peptide. The antiserum was prepared by the direction of Prof. T. Haraguchi (Ref.3).</p>
Data Link	UniProtKBt P45973 (CBX5_HUMAN)
Please note: All products are FOR RESEARCH USE ONLY. NOT FOR USE IN DIAGNOSTIC PROCEDURES. NOT FOR MILITARY USE.	

Data Images: 70-221 Anti-HP1 α /CBX5 antibody, rabbit polyclonal

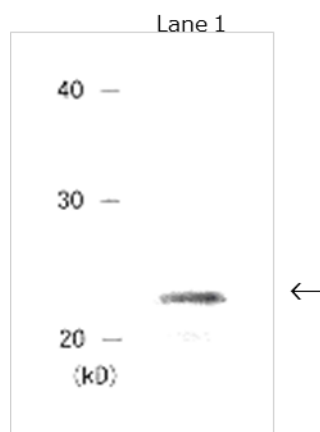


Fig. Detection of HP1 α protein by Western blotting.

Lane 1: Crude extract of MCF7 cells

The antiserum was diluted 1,000 fold before use.

References: This product was used in the following publication.

1. Lomberk G *et al* "The Heterochromatin Protein 1 family" *Genome Biol* **7**: 228 Review (2006) PMID: [17224041](#)
2. Kametaka A *et al* "Interaction of the chromatin compaction-inducing domain (LR domain) of Ki-67 antigen with HP1 proteins" *Genes Cells* **7**: 1231-1242 (2002) PMID: [12485163](#)
3. Wang F *et al* "The assembly and maintenance of heterochromatin initiated by transgene repeats are independent of the RNA interference pathway in mammalian cells" *Mol Cell Biol* **26**: 4028-4040 (2006) PMID: [16705157](#) **ChIp, IF**

Related products

70-223 Anti-HP1 β /CBX1 antibody, rabbit polyclonal

70-225 Anti-HP1 γ /CBX3 antibody, rabbit polyclonal