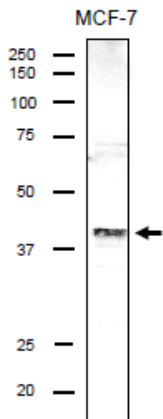


## Anti- DSN1 / Mis13 antibody, rabbit serum

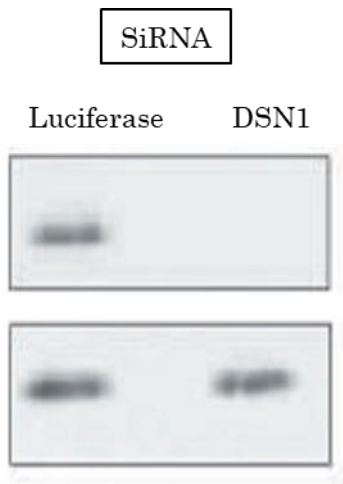
<b>Product code</b>	70-101
<b>Size</b>	100µl
<b>Storage</b>	Store at 4°C for short term. For long term storage store at -20°C. Aliquot to avoid repeated freezing thawing.
<b>Concentration</b>	N/A
<b>Buffer</b>	0.05% sodium azide
<b>Purity</b>	Anti-GST antibodies have been removed from the rabbit antiserum with affinity column conjugated with GST
<b>Immunogen</b>	Recombinant GST-DSN1 (1-356 aa)
<b>Isotype</b>	Rabbit IgG
<b>Reactivity</b>	Human, mouse and rat
<b>Special notes</b>	Specificity has been validated with siRNA of human DSN1 for WB and IF.
<b>Application</b>	1) Western blotting (1,000 fold dilution) 2) Immunofluorescence-staining (1,000 fold dilution,)
<b>Background</b>	DSN1 / Mis13 (human: 356 aa. 40 kDa) is part of the MIS12 complex which is required for normal chromosome alignment and segregation and kinetochore formation during mitosis. Defects in kinetochore proteins often lead to aneuploidy and cancer. It is a component of the MIS12 complex composed of MIS12, DSN1, NSL1 and PMF1 and also interacts with CASC5, CBX3 and CBX5. Note that DSN1 protein is expressed in actively dividing cells.
<b>Data Link</b>	UniProtKB <a href="#">Q9H410</a> (DSN1_HUMAN)
Please note: All products are FOR RESEARCH USE ONLY. NOT FOR USE IN DIAGNOSTIC PROCEDURES. NOT FOR MILITARY USE.	

**Data Images:** 70-101 Anti- DSN1 / Mis13 antibody, rabbit serum

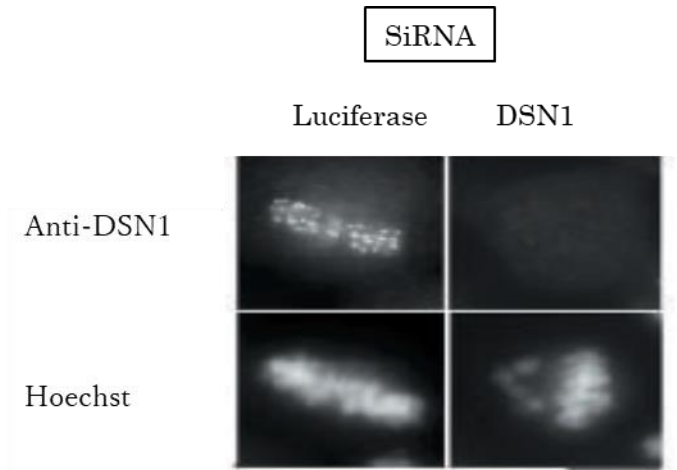


**Fig.1 Identification of endogenous DSN1 protein in the crude lysate of MCF-7 cells by using anti-DSN antibody.**

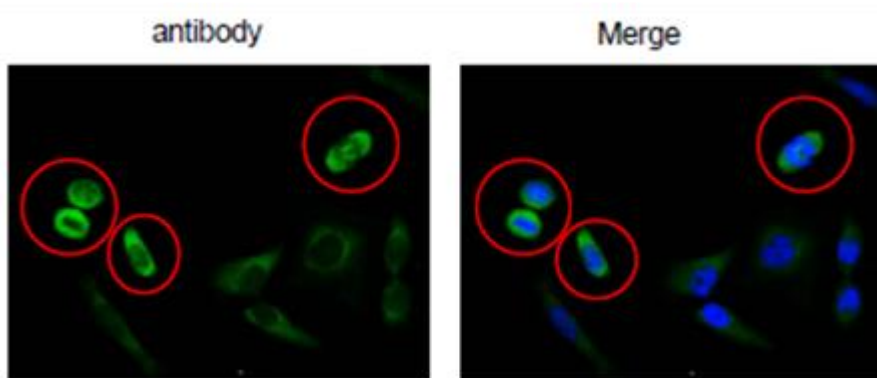
The cell lysate (20 µg) was separated by SDS-PAGE and analyzed by western blotting with anti-DSN antibody at 1/1,000 dilution. As the second antibody, anti-rabbit IgG antibody conjugated with HRP (Abcam, ab97051) was used at 10,000 dilution.



**Fig.2 Validation of specificity of the anti-DSN1 antibody in WB by using siRNA.** Expression of siRNA for DSN1 for 24 h greatly reduced DSN1 in HeLa cells. Luciferase siRNA was used as a control. Antibody was used at 1/1,000 dilution.



**Fig.3 Immunofluorescence staining of HeLa cell chromosome with this antibody and validation of specificity with siRNA.** Expression of siRNA for DSN1 for 24 h greatly reduced DSN expression in the cell. Luciferase siRNA was used as a control. Antibody was used at 1/1,000 dilution. Mitotic cells were accumulated by nocodazole treatment and chromosomes were spread on coverglass.



**Fig.4 Immunofluorescence staining of DSN1 in HeLa cells using anti-DSN1 antibody.**

The cells were fixed with 4% paraformaldehyde. The antibody was used at 1/100 dilution. As the second antibody, Alexa Fluor conjugated goat anti rabbit IgG was used at 1/1,000 dilution. Nuclear DNA was stained with DAPI and the merged image was shown on the right.

Note that DSN1 is abundantly expressed in mitotic cells on mitotic apparatus.

**Reference:** This antibody has been used in the following reference

Obuse C *et al* "A conserved Mis 12 centromere complex is linked to heterochromatic HP1 and outer kinetochore protein Zwint-1" *Nat Cell Biol* **6**: 1135-1141 (2004) PMID: [15502821](https://pubmed.ncbi.nlm.nih.gov/15502821/)