

Anti-Cdk1 / Cdc2 (Xenopus) antibody, rabbit polyclonal

Product code	69-003
Size	100 µg
Storage	-20°C
Concentration	2.0 mg/ml
Buffer	PBS ⁻ with 50% glycerol
Purity	Purified IgG fraction with protein A from rabbit antiserum.
Immunogen	Synthetic peptide corresponding to C-terminal region of Xenopus Cdk1 protein (C-KSSLPDNQIRN) conjugated with KLH
Isotype	Rabbit IgG
Reactivity	Xenopus, human. Not tested in other species.
Special notes	N/A
Application	1. Western blotting (1/200-1/500 dilution) 2. Immunoprecipitation (1/100 dilution)
Background	Cdk1(cyclin-dependent kinase1) plays a key role in the control of the eukaryotic cell cycle. It is required in higher cells for entry into S-phase and mitosis. Component of the kinase complex that phosphorylates the repetitive C-terminus of RNA polymerase II. Phosphorylation at Thr-14 or Tyr-15 inactivates the enzyme, while phosphorylation at Thr-161 activates it. Molecular mass is 34,506
Data Link	UniProtKB P35567 (CDK1A_XENLA)
Please note: All products are FOR RESEARCH USE ONLY. NOT FOR USE IN DIAGNOSTIC PROCEDURES. NOT FOR MILITARY USE.	

Data Images: 69-003 Anti-Cdk1 / Cdc2 (Xenopus) antibody, rabbit polyclonal

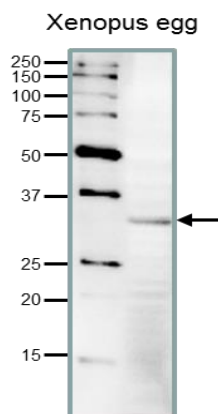


Fig.1 Detection of endogenous Cdk1 in Xenopus egg extract by Western blot.

Extract (30 μ g) of *Xenopus laevis* eggs was used for western blot analysis and the antibody was used at 1/200 dilution. The molecular mass is 34.5 kDa

Reference: This antibody was described in Ref.1 and used in Ref 1 and 2.

1. Masuda H and Shibata T. Role of gamma-tubulin in mitosis-specific microtubule nucleation from the *Schizosaccharomyces pombe* spindle pole body. [J Cell Sci.](#) 1996 Jan;109 (Pt 1):165-77. **WB, IP**
2. Kimura K et al. Phosphorylation and activation of 13S condensin by Cdc2 in vitro. [Science.](#) 1998 Oct 16;282(5388):487-90. **WB**