

Anti-Mrc1 (*S. pombe*) antibody, rabbit serum

Product code	63-151
Size	50 µl
Storage	Store 4°C for short term For long term storage store at -20°C. Aliquot to avoid repeated freezing and thawing.
Concentration	N/A
Buffer	0.05% sodium azide
Purity	Rabbit antiserum
Immunogen	Purified recombinant protein containing amino acids 1~317 of Mrc1
Isotype	Rabbit IgG
Reactivity	<i>Schizosaccharomyces pombe</i>
Special notes	N/A
Application	1. Western blotting (x 5,000 dilution) 2. Immunoprecipitation
Background	Mrc1 (Mediator of replication checkpoint 1) is a S-phase checkpoint protein of <i>Schizosaccharomyces pombe</i> found at replication forks, required for phosphorylation and activation of Cds1 during DNA replication stress, where it forms a replication pausing complex, and is phosphorylated by Rad3 and Tel1 kinases. The phosphorylated form of Mrc1 is detected by a change in the electrophoretic mobility.
Data Link	UniProtKB Q9P7T4 (MRC1_SCHPO)
Please note: All products are FOR RESEARCH USE ONLY. NOT FOR USE IN DIAGNOSTIC PROCEDURES. NOT FOR MILITARY USE.	

Data Images: 63-151 Anti-Mrc1 (*S. pombe*) antibody, rabbit serum

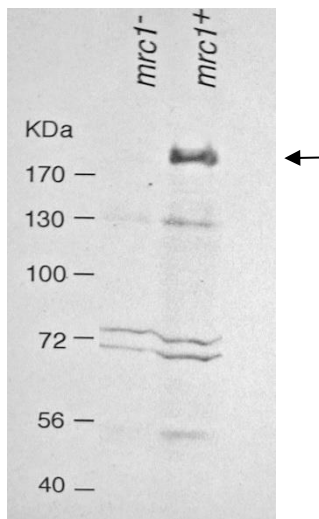


Fig.1 Western blot analysis of Mrc1 in the whole cell extracts.

Lane 1: *mrc1*⁻ strain

Lane 2: Wild type strain

Reference : This product is described and used in reference 1.

1. Zhao H *et al* "Replication checkpoint protein Mrc1 is regulated by Rad3 and Tel1 in fission yeast"
Mol Cell Biol **23**: 8395-8403 (2003) PMID: [14585996](https://pubmed.ncbi.nlm.nih.gov/14585996/)