

Anti-Psm1 (*S. pombe*) antibody, rabbit serum

Product code	63-137
Size	100 µl
Storage	Store 4°C for short term For long term storage store at -20°C. Aliquot to avoid repeated freezing and thawing.
Concentration	N/A
Buffer	0.05% sodium azide
Purity	Rabbit antiserum
Immunogen	GST-Psm1 (N-terminal 631 amino acids) fusion protein
Isotype	Rabbit IgG
Reactivity	<i>S. pombe</i> Psm1
Special notes	N/A
Application	1. Immunoblotting (dilution: 1/300~1/1,000) 2. Immunoprecipitation
Background	<i>Schizosaccharomyces pombe</i> Psm1 is a component of protein complex called cohesin which is required for sister chromatid cohesion during cell cycle and in DNA repair. The cohesion complex apparently forms a large proteinaceous ring within which sister chromatids can be trapped. At anaphase, the complex is cleaved and dissociates from chromatin, allowing sister chromatids to segregate. <i>S. pombe</i> cohesin complexes are composed of the Psm1 and Psm3 heterodimer attached via their hinge domain, Rad21 which link them, and Psc3, which interacts with Rad21. Cohesin subunits are enriched in broad centromere region.
Data Link	UniProtKB O94383 (SMC1_SCHPO)
Please note: All products are FOR RESEARCH USE ONLY. NOT FOR USE IN DIAGNOSTIC PROCEDURES. NOT FOR MILITARY USE.	

Data Images: 63-137 Anti-Psm1 (*S. pombe*) antibody, rabbit serum

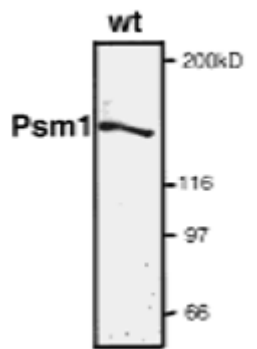


Fig.1 Detection of endogenous level of Psm1 protein by western blotting.

Psm1 showed the expected 140 kD band.

References: This antibody has been used in the following publications.

1. Tomonaga T *et al* "Characterization of fission yeast cohesin:essential anaphase proteolysis of Rad21 phosphorylated in the S phase." *Genes Dev* **14**: 2757-2770 (2000) PMID: [11069892](#). **WB (S. pombe)**
2. Sakai A *et al* "Condensin but not cohesin SMC heterodimer induces DNA reannealing through protein-protein assembly." *EMBO J* **22**:2764-2775 (2003) PMID: [12773391](#). **WB (S. pombe)**
3. Murayama Y, Uhlmann F. Biochemical reconstitution of topological DNA binding by the cohesin ring. *Nature*. 2014 Jan 16;505(7483):367-71. PMID: [24291789](#). **WB (S. pombe)**