

Anti-Collectin-11 / CL-K1 antibody, mouse monoclonal (821)

Product code	72-040
Size	100 µg
Storage	-20°C
Concentration	1.0 mg/ml
Buffer	PBS- with 50% glycerol
Purity	Purified IgG fraction with protein A from hybridoma cell culture medium.
Immunogen	Recombinant human collectin-11 (amino acids 107 to 271) corresponding to the carbohydrate recognition domain (CRD) expressed in Escherichia coli.
Isotype	mouse IgG1κ
Reactivity	Human, mouse, rat and chinese hamster
Special notes	N/A
Application	<ol style="list-style-type: none"> 1. Western blot (1/500~1/1,000) 2. Immunofluorescent staining (1/500) 3. ELISA (assay dependent)
Background	<p>Collectins are characterized by a collagen-like sequence and a carbohydrate recognition domain (CRD) and are members of the vertebrate C-type lectin superfamily. Collectins play an important role in the innate immune system. Collectin-11 (CL-K1) is a secreted-type protein and detected in human serum and the Golgi of almost all organs. At least 10 isoforms produced by alternative splicing are known. Isoform 1 of Collectin-11 has an open reading frame of 813 base pairs encoding 271 amino acids. It has a signal peptide consisting of 25 amino acids at N-terminal. CL-K1 in supernatant of CL-K1-cDNA-transfected CHO cells shows an apparent molecular mass of 34 kDa</p>
Data Link	UniProtKB Q9BWP8 (COL11_HUMAN) GenBank accession number : 78989, AB119525, AB119650, AB119651 and AB119652.
Please note: All products are FOR RESEARCH USE ONLY. NOT FOR USE IN DIAGNOSTIC PROCEDURES. NOT FOR MILITARY USE.	

Data Images: 72-040 Anti-Collectin-11 / CL-K1 antibody, mouse monoclonal (821)

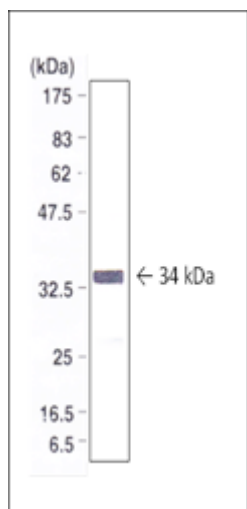


Fig.1. Identification of Collectin-11 protein by Western blotting

Supernatant of CHO cells expressing human recombinant Collectin-11 (1 μ g/ml) was separated on SDS-PAGE. The monoclonal antibody was used at 1/500 dilution.

The collectin protein migrates at 34 kDa position

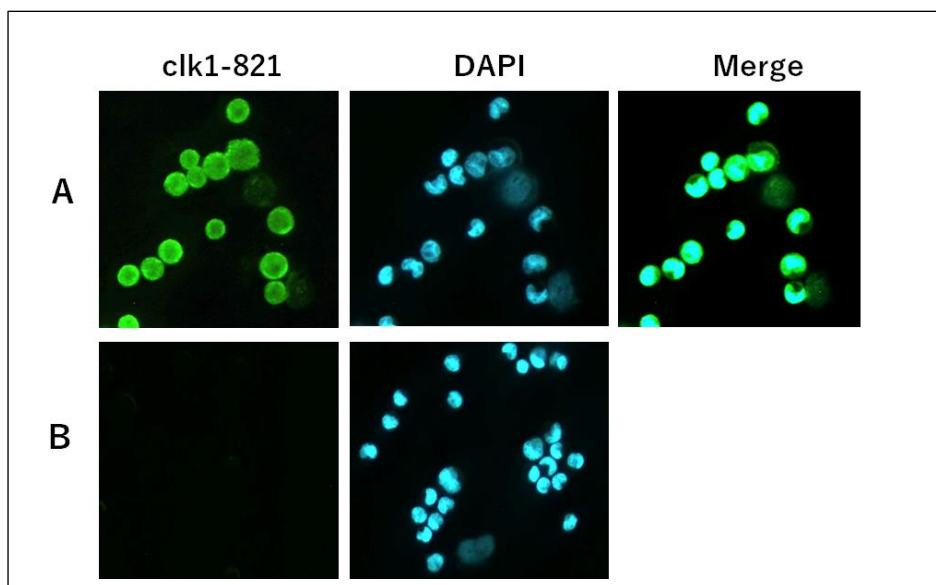


Fig.2. Detection of collectin-11 protein transfected in CHO cells by immunofluorescence staining

A: CHO cells expressing human recombinant Collectin-11.

B: CHO cells (mock infected cells).

The antibody was used at 1/500 dilution. The FITC-conjugate rabbit anti-mouse IgG (x4000) was added. Nucleus (DNA) was stained with DAPI.

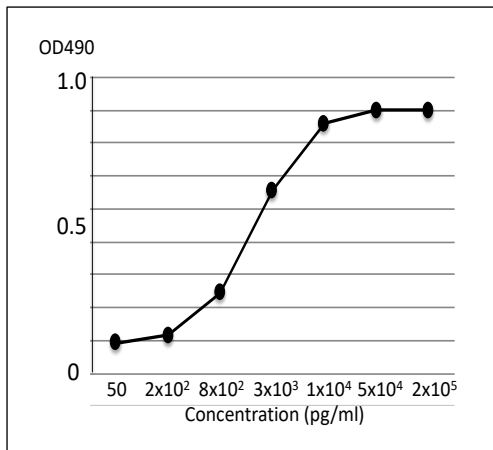


Fig.3 Titration of recombinant CL-K1 protein transfected in CHO cells by indirect ELISA using monoclonal antibody.

The indicated amounts of recombinant Collectin-11 protein expressed in CHO cells were coated onto the wells of the ELISA plate. After blocking with 5% skim milk, monoclonal antibody at the 1/1000 dilution was added to the each well. HRP-conjugated goat anti-mouse IgG (100µl, x4000 dilution) was added. As substrate, orthophenylenediamine was used. Optical density (OD) measured at 490nm.

Related product

72-041 Anti-collectin placenta 1 (CL-P1), mouse monoclonal (53)

References: This antibody was used and cited in the following publication.

Yoshizaki T et al. Comparison of human blood concentrations of collectin kidney 1 and mannan-binding lectin. [J Biochem.](#) 2012 Jan;151(1):57-64. PMID: [21893516](#). **WB (human)**