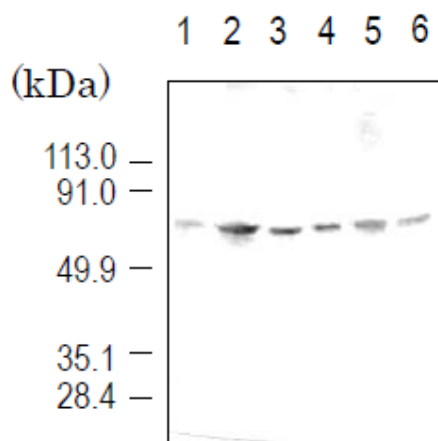


## Anti-Importin $\alpha$ 3 / KPNA4/Qip1 antibody, rat monoclonal (3D10)

<b>Product code</b>	70-325
<b>Size</b>	200 $\mu$ g
<b>Storage</b>	-20°C
<b>Concentration</b>	1.0 mg/ml
<b>Buffer</b>	PBS- with 50% glycerol
<b>Purity</b>	Purified IgG fraction with protein A from hybridoma cell culture medium.
<b>Immunogen</b>	Recombinant mouse importin $\alpha$ 3 /KPNA4/ Qip 1 (full length)
<b>Isotype</b>	Rat IgG2a $\kappa$
<b>Reactivity</b>	Human, simian, mouse, rat, hamster, canine and bovine importin $\alpha$ 3. This antibody doesn't recognize other importin $\alpha$ family including $\alpha$ 4.
<b>Special notes</b>	N/A
<b>Application</b>	1. Western blotting (250~500 fold dilution) 2. 2. ELISA 3. This antibody doesn't work for immunostaining and immunoprecipitation.
<b>Background</b>	<p>Importin <math>\alpha</math> proteins play a pivotal role in the import of proteins from the cytoplasm to the nucleus. Importin <math>\alpha</math> proteins shuttle between nucleus and cytoplasm, bind nuclear localization signal (NLS)-bearing proteins, and mediate the protein import into the nucleus with importin <math>\beta</math>. Several importin <math>\alpha</math> isotypes have been identified, each exhibiting differential recognition and nuclear transport, probably via preferential binding to a particular NLS. The <b>importin <math>\alpha</math> 3 (KPNA4, Qip1)</b> is a member of the importin <math>\alpha</math> family of proteins belonging to the Qip1 subfamily.</p> <p>The antibody was purified from the serum-free cultured medium of the hybridoma under mild conditions by proprietary chromatography processes.</p>
<b>Data Link</b>	<a href="https://www.uniprot.org/entry/O35343">uniprot/O35343</a> mouse importin $\alpha$ 3
Please note: All products are FOR RESEARCH USE ONLY. NOT FOR USE IN DIAGNOSTIC PROCEDURES. NOT FOR MILITARY USE.	

**Data Images:** 70-325 Anti- Importin  $\alpha$  3 / KPNA4/Qip1 antibody, rat monoclonal (3D10)



**Fig.1** Detection of importin  $\alpha$ 3 (58 kD) by Western blotting using the antibody 3D10.

Sample is the total cell extract.

lane1: HeLa (human)

lane2: COS7 (simian)

lane3: L929 (mouse)

lane4: NRK (rat)

lane5: BHK (hamster)

lane6: MDBK (bovine)