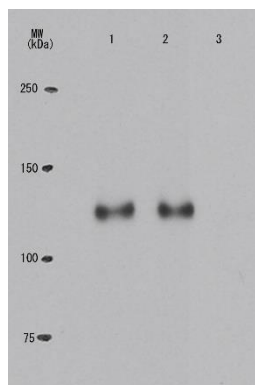


## Anti-RB p-Thr821 (human) antibody, mouse monoclonal (24A7)

<b>Product code</b>	71-173
<b>Size</b>	100 µg
<b>Storage</b>	-20°C
<b>Concentration</b>	1.0 mg/ml
<b>Buffer</b>	PBS <sup>-</sup> with 50% glycerol
<b>Purity</b>	Purified IgG fraction with protein A from hybridoma cell culture medium.
<b>Immunogen</b>	Synthetic peptide containing phospho-Thr821 of human Rb.
<b>Isotype</b>	Mouse IgG1κ
<b>Reactivity</b>	Specific to human Rb phosphorylated at Thr821. Not tested for other species. Can detect endogenous levels of Rb phosphorylated at Thr821 in most cell lines.
<b>Special notes</b>	N/A
<b>Application</b>	1. Western blotting (~1µg/ml) 2. ELISA
<b>Background</b>	Retinoblastoma protein (Rb), the tumor suppressor product of the retinoblastoma susceptibility gene, is a 110 kDa protein that functions as a negative regulator of the cell cycle by arresting cells in the G1 phase and halting inappropriate cell proliferation. At the transcriptional level, Rb protein exerts its growth suppressive function by binding to transcription factors including E2F1, PU1, ATF2, UBF, Elf-1 and c-Abl . Loss of Rb function leads to uncontrolled cell growth and tumor development and is found in all retinoblastomas and in a variety of other human malignancies. The ability of Rb protein to inhibit transcription and cell cycle progression is inactivated by phosphorylation, which is catalyzed by the cyclin-dependent protein kinases.
<b>Data Link</b>	UniProtKB <a href="#">P06400</a> (RB_HUMAN)
Please note: All products are FOR RESEARCH USE ONLY. NOT FOR USE IN DIAGNOSTIC PROCEDURES. NOT FOR MILITARY USE.	

**Data Images:** 71-173 Anti-RB p-Thr821 (human) antibody, mouse monoclonal (24A7)



**Fig.1 Specificity of the monoclonal antibody (24A7) to the phosphorylated Rb at Thr821 as demonstrated by Western blotting.**

Crude extracts of human lung carcinoma cell line H1299 transfected with plasmid expressing Myc-tagged wild-type Rb (lane 1), Rb (S795A) (lane 2) or Rb (T821A) were immuno-precipitated with anti-Myc antibody and the precipitates were analyzed by Western blotting with monoclonal antibody #24A7 (Data provided by Dr. Y. Inoue at the JFCR Cancer Research Institute, Tokyo).

**References :** This antibody has not been used in publication yet.

#### **Related product**

71-171 anti-Rb phospho-Ser795 antibody, monoclonal (28B5)