

Anti-IL-6 antibody, rabbit polyclonal

Product code	72-010
Size	100 µg
Storage	-20°C
Concentration	1.0 mg/ml
Buffer	PBS- with 50% glycerol
Purity	Purified IgG fraction with protein A from hybridoma cell culture medium
Immunogen	Recombinant mouse IL-6 with His 6- tag at N-terminal, expressed in E. coli
Isotype	rabbit IgG
Reactivity	Mouse IL-6. It is very likely that the antibody reacts also with other mammalian IL6 from the sequence homology and polyclonal nature.
Special notes	N/A
Application	<ol style="list-style-type: none"> 1. Western blotting (1/1000-1/5,000) 2. Immunohistochemistry (~1/1,000) 3. Immunocytochemistry (~1/100) 4. ELISA (1/1,000-1/10,000)
Background	<p>IL-6 is an inflammatory cytokine of the acute phase response, associated with immunity, tissue regeneration and metabolism. A bond of IL-6 to IL-6 receptor recruits adopter molecules, gp130 and STAT3 near the cell membrane, leading to initiate the phosphorylation of them by JAK. The manner of IL-6 signaling is classified into two types such as 'Classic signaling' from membrane-bound IL-6 receptor and 'Trans signaling' from soluble IL-6 receptor. IL-6 is known to induce a differentiation and a proliferation of B lymphocytes and T lymphocytes, a migration of basophils, a differentiation of osteoclasts and an inflammatory reaction in cancers or autoimmune diseases.</p>
Data Link	UniProtKB P08505 (IL6_MOUSE)
Please note: All products are FOR RESEARCH USE ONLY. NOT FOR USE IN DIAGNOSTIC PROCEDURES. NOT FOR MILITARY USE.	

Data Images: 72-010 Anti- IL-6 antibody, rabbit polyclonal

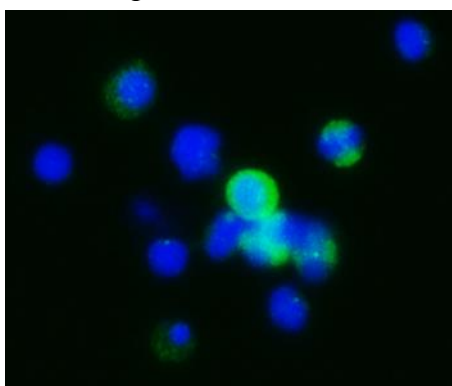


Fig 1: Immunofluorescence staining of mouse bone marrow cells

Mouse bone marrow cells were fixed with methanol. IL-6 was treated with anti-IL-6 antibody diluted at 1/100. Anti-rabbit IgG antibody (Alexa Fluor 488 conjugated) was used as a secondary antibody in 1/1,000 of dilution. Nuclei was stained with DAPI.

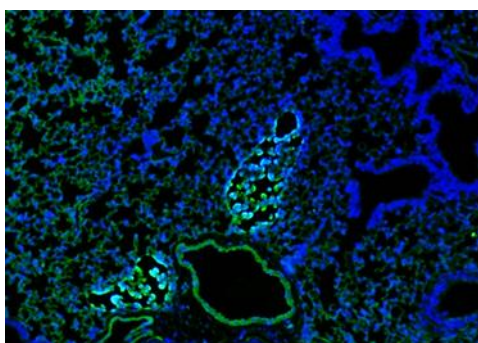


Fig 2: Immunohistochemistry of mouse lung tissue.

IL-6 was treated with anti-IL-6 antibody diluted at 1/1000. Anti-rabbit IgG antibody (Alexa Fluor 488 conjugated) was used as a secondary antibody at 1/1,000 dilution. Nuclei were stained with DAPI.

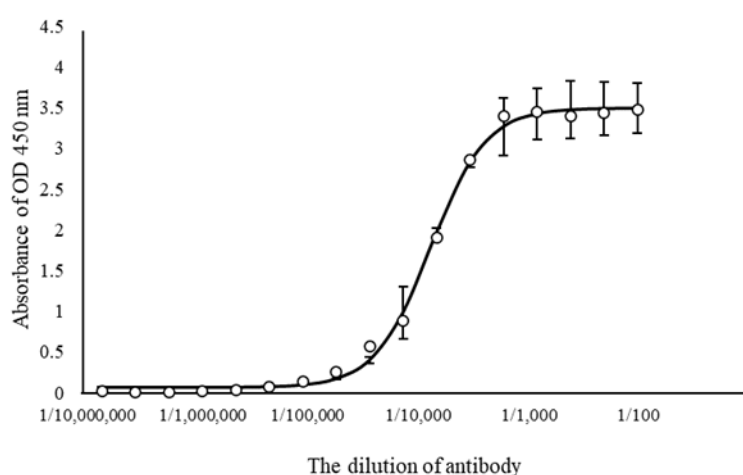


Fig 3: ELISA. The activity of anti-IL-6 antibody.

Mouse recombinant IL-6 (1µg/mL) was coated on ELISA plate. 5% skim milk was used for blocking. Anti-IL-6 antibody was used as a primary antibody. Anti-rabbit IgG antibody (HRP conjugated) was

used as a secondary antibody at 1/2,000 of dilution.

Reference :

1. Toshio Tanaka *et al.*, IL-6 in inflammation, immunity, and disease, *Cold Spring Harb Perspect Biol.* 4:6(10) (2014) PMID: [25190079](https://pubmed.ncbi.nlm.nih.gov/25190079/)