

Anti-Mcm2 (*S. pombe*) antibody, rabbit polyclonal

63-020 100 µg

Shipment and Storage: Shipped at 4°C or -20°C. Store at -20°C. Do not freeze.

Immunogen: Recombinant His6 202-527 amino acids of *S. pombe* Mcm2.

Form: 2.0 mg/ml in PBS- with 50% glycerol. IgG fraction purified with Protein A, Sterilized by ultrafiltration.

Reactivity: *S. pombe* Mcm2 protein (MW: 92.8 K).

Application:

1. Western blot (1/1,000-1/2,000)
2. Chromatin Immuno-Precipitation
3. Immunoprecipitation

Background: Mcm2 acts as a component of mcm2-7 complex which is the putative replicative helicase essential for 'once per cell cycle' DNA replication initiation and elongation in eukaryotic cells. Predicted molecular mass, 92.8 kDa with 830 amino acids

Subcellular location: Nucleus

Data Link: UniProtKB [40377](http://www.uniprot.org/entry/40377) (*S. pombe* Mcm2)

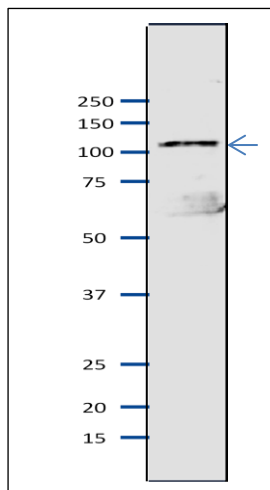


Fig.1 Western blot of Mcm2 protein in *S. pombe* crude extract

Anti-Mcm2 antibody was used at 1/2000 dilution. Second antibody (goat anti-rabbit IgG antibody, HRP-conjugated, ab97051) was used at 1/10,000 dilution. *S. pombe* extract, 8 µg.

References: This product has been used in the following publications.

Hayashi M et al. Genome-wide localization of pre-RC sites and identification of replication origins in fission yeast. *EMBO J.* 2007, Mar;26(5): 1327-39. PMID: [17304213](https://pubmed.ncbi.nlm.nih.gov/17304213/) .ChIP: **S. pombe**

Takahashi T et al. Multiple ORC-binding sites are required for efficient MCM loading and origin firing in fission yeast. *EMBO J.* 2003, Feb;22(4):964-74. PMID: [12574132](https://pubmed.ncbi.nlm.nih.gov/12574132/) IP: **S. pombe**

Ogawa Y et al. Association of Fission Yeast Orp1 and Mcm6 Proteins with Chromosomal Replication Origins. Mol. Cell. Biol. 1999, Oct;19(10):7228-36. PMID: [10490657](#) WB, ChIP:
S. pombe

Related Products.

- 63-021 Anti-Mcm3 (S. pombe) antibody
- 63-022 Anti-Mcm5 (S. pombe) antibody
- 63-023 Anti-Mcm6 (S. pombe) antibody
- 63-024 Anti-Mcm7 (S. pombe) antibody
- 63-030 Anti-Psf1 (S. pombe) antibody
- 63-032 Anti-Psf3 (S. pombe) antibody
- 63-035 Anti-Sld5 (S. pombe) antibody
- 63-037 Anti-Ssb2 / Rpa2 (S.pombe) antibody
- 63-041 Anti-Orc2 (S. pombe) antibody
- 63-043 Anti-Orc4 (S. pombe) antibody

Please note: All products are FOR RESEARCH USE ONLY. NOT FOR USE IN DIAGNOSTIC PROCEDURES. NOT FOR MILITARY USE