

## Anti-GST antibody, mouse monoclonal (#21)

60-025 100 µg

**Shipping and Storage:** Shipped at 4°C or -20°C, and store at -20°C

**Immunogen:** Recombinant *S. japonicum* GST protein

**Form:** 1.0 mg/ml in PBS with 50% glycerol, filter sterilized. Azide- and carrier-free.

**Product:** Produced by hybridoma grown in serum-free medium and purified by protein A.

**Isotype:** IgG2a κ

**Reactivity:** *S. japonicum* GST protein and GST-fused proteins

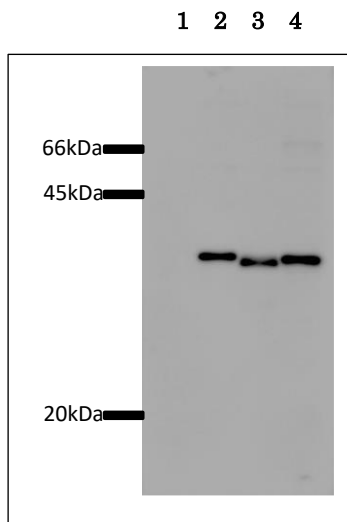
### Applications

1. Western blot (1/1,000-1/3,000)
2. Immunoprecipitation (1/200)
3. Immunofluorescence staining (1/500)

**Background:** GST (Glutathione S-Transferase) is a 26kDa protein encoded by the parasitic helminth *Schistosoma japonicum* and widely used in the pGEX family of GST plasmid expression vectors as a fusion protein with foreign proteins.

**Related Product:** [60-021 Anti-GST antibody, rabbit polyclonal](#)

**Reference:** This antibody has not been used in publication yet.



**Fig. Western blot of GST-fused proteins**

Samples: HeLa cell extracts, 10 µg

1. Control cells
2. Cells transformed with COXFA412-GST expressing plasmid
3. Cells transformed with COXFA4-GST expressing plasmid
4. Cells transformed with COXFA411-GST expressing plasmid

The anti-GST antibody was used at 1/1,000 dilution and as the second antibody, HRP-conjugated goat anti-mouse IgG was used at 1/20,000 dilution