

## Anti-Rfa3/Rpa3 (*S. cerevisiae*) antibody, rabbit serum

62-152 50  $\mu$ l

**Shipping and Storage:** Shipped at 4°C or -20°C and store at -20°C.

**Immunogen:** Recombinant Rfa3 protein

**Form:** Rabbit antiserum added with 0.05% sodium azide.

**Reactivity:** *S. cerevisiae* Rfa3 protein.

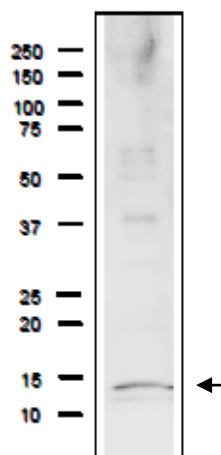
**Applications:** Western blotting (1/2,000 dilution). Not tested for other applications

**Background:** Subunit of heterotrimeric Replication Protein A (RPA); RPA is a highly conserved single-stranded DNA binding protein complex involved in DNA replication, repair, recombination; RPA protects against inappropriate telomere recombination, and upon telomere uncapping, prevents cell proliferation by a checkpoint-independent pathway; with Sgs1p-Top2p-Rmi1p, stimulates DNA catenation/decatenation activity of Top3p; protein abundance increases in response to DNA replication stress

RFA3 encodes 122 amino acids with molecular mass of 13,816

**Data Link:** UniProtKB [P26755](#) (RFA3\_YEAST), SGD [RFA3/overview](#) RFA3 / YJL173C

**Reference:** This antibody has not been used in publication.



**Fig. Detection of endogenous Rfa3 protein in whole cell extract of *S.cerevisiae*.**

The extract of strain BY4741 (20  $\mu$ g) was separated on SDS-PAGE 10-20% gradient gel. The anti-Rfa1 antibody was used at 1/2,000 dilution. As the second antibody, HRP-conjugated goat anti-rabbit IgG (ab97051) was used at 1/10,000 dilution. Molecular mass is 13.8 kDa