

Anti-Mcm3 (*S. pombe*) antibody, rabbit serum

63-021 100 µl

Shipping and Storage: Shipped at 4°C or -20°C and store at -20°C.

Immunogen: Recombinant His6- Mcm3 (1-217 amino acids) of *S. pombe*.

Form: Whole anti-Mcm3 serum added with sodium azide, 0.09 %.

Reactivity: Reacts with *S. pombe* Mcm3 protein

Applications:

1. Western blot (1/1000-1/2000)

Background: Mcm3 acts as a component of mcm2-7 complex which is the putative replicative helicase essential for 'once per cell cycle' DNA replication initiation and elongation in eukaryotic cells. (Mass: 97.5 kDa).

Subcellular location: Nucleus

Data Link: UniProtKB [30666](#) (*S. pombe* Mcm3)

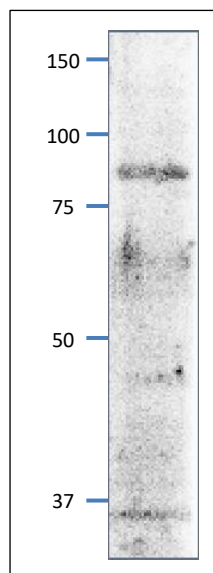


Fig.1 Western blot of Mcm3 protein in *S. pombe* crude extract
 Anti-Mcm3 antibody was used at 1/2000 dilution. Second antibody (goat anti-rabbit IgG antibody, HRP-conjugated, ab97051) was used at 1/10,000 dilution. *S. pombe* extract, 8 µg.

Reference : This antibody has not been yet in publication.

Related Products:

63-020 Anti-Mcm2 (*S. pombe*) antibody

63-022 Anti-Mcm5 (*S. pombe*) antibody

63-023 Anti-Mcm6 (*S. pombe*) antibody

63-024 Anti-Mcm7 (*S. pombe*) antibody

63-030 Anti-Psf1 (*S. pombe*) antibody

63-032 Anti-Psf3 (*S. pombe*) antibody

63-035 Anti-Sld5 (*S. pombe*) antibody

63-037 Anti-Ssb2 / Rpa2 (*S. pombe*) antibody

63-041 Anti-Orc2 (*S. pombe*) antibody

63-043 Anti-Orc4 (*S. pombe*) antibody

63-050 Anti-Cdc45 Sna41 (*S. pombe*) antibody