

## Anti-Mcm5 (*S. pombe*) antibody, rabbit polyclonal

63-022      100 µg

**Shipping and Storage:** Shipped at 4°C or -20°C and store at -20°C.

**Immunogen:** Recombinant His6-Mcm5 ( 1-279 amino acids) of *S. pombe*.

**Form:** 2.0 mg/ml in PBS- with 50% glycerol. IgG fraction purified with Protein A. Sterilized by ultra-filtration..

**Reactivity:** *S. pombe* Mcm5 protein.

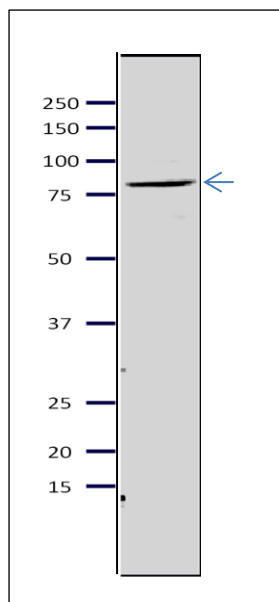
### Applications:

1. Western blot (1/2,000) Not tested for other applications.

**Background:** Mcm5 acts as a component of mcm2-7 complex which is the putative replicative helicase essential for 'once per cell cycle' DNA replication initiation and elongation in eukaryotic cells. (Calculated Molecular Mass: 80.1 kDa)

**Subcellular location:** Nucleus

**Data Link:** UniProtKB [41389](http://www.uniprot.org/entry/41389) (*S. pombe* Mcm5)



**Fig.1 Western blot of Mcm5 protein in *S. pombe* crude extract**

Anti-Mcm5 antibody was used at 1/2000 dilution. Second antibody (goat anti-rabbit IgG antibody, HRP-conjugated, ab97051) was used at 1/10,000 dilution. *S. pombe* extract, 8 µg.

**References:** This product has been used in the following publications.

1. Yamada Y et al. A Novel Intermediate in Initiation Complex Assembly for Fission Yeast DNA Replication. [Mol Biol Cell](http://www.ncbi.nlm.nih.gov/pubmed/15194812). 2004 Aug;15(8):3740-50. PMID: [15194812](http://www.ncbi.nlm.nih.gov/pubmed/15194812). **WB (*S. pombe*)**
2. Kanke M et al. Auxin-inducible protein depletion system in fission yeast. [BMC Cell Biol](http://www.ncbi.nlm.nih.gov/pubmed/21314938). 2011 Feb 11;12:8. PMID: [21314938](http://www.ncbi.nlm.nih.gov/pubmed/21314938) . **WB (*S. pombe*)**
3. Santosa V et al. The Fission Yeast Minichromosomal Maintenance (MCM)-binding Protein (MCM-BP), Mcb1, Regulates MCM Function during Prereplicative Complex Formation in DNA Replication. [J Biol Chem](http://www.ncbi.nlm.nih.gov/pubmed/23322785). 2013 Mar 8;288(10):6864-80. PMID: [23322785](http://www.ncbi.nlm.nih.gov/pubmed/23322785). **WB (*S. pombe*)**

**Related Products.**

- 63-020 Anti-Mcm2 (*S. pombe*) antibody
- 63-021 Anti-Mcm3 (*S. pombe*) antibody
- 63-023 Anti-Mcm6 (*S. pombe*) antibody
- 63-024 Anti-Mcm7 (*S. pombe*) antibody
- 63-030 Anti-Psf1 (*S. pombe*) antibody
- 63-032 Anti-Psf3 (*S. pombe*) antibody
- 63-035 Anti-Sld5 (*S. pombe*) antibody
- 63-037 Anti-Ssb2 / Rpa2 (*S.pombe*) antibody
- 63-041 Anti-Orc2 (*S. pombe*) antibody
- 63-043 Anti-Orc4 (*S. pombe*) antibody