

## Anti-Mcm6 / Mis5 (*S. pombe*) antibody, rabbit serum

63-023      100 µl

**Shipping and Storage:** Shipped at 4°C or -20°C and store at -20°C.

**Immunogen:** Recombinant His6 tagged 43-458 amino acids of *S. pombe* Mcm6 / Mis5 protein.

**Form:** Rabbit antiserum added with sodium azide, 0.09 %.

**Reactivity:** *S. pombe* Mcm6 / Mis5 protein (MW: 95.5 kDa).

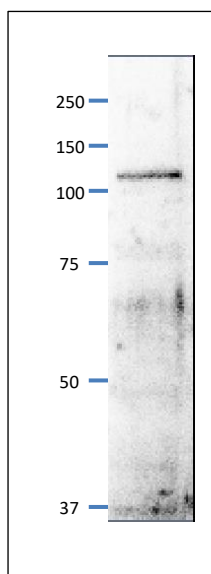
### Applications:

1. Western blotting (1/500-1/1,000)
2. Immunoprecipitation ( 1/100 -1/300)
3. Chromatin Immuno-Precipitation (Assay dependent)
4. Immuno-Fluorescence Staining (Assay dependent)

**Background:** Mcm6 acts as a component of Mcm2-7 complex which is the putative replicative helicase essential for 'once per cell cycle' DNA replication initiation and elongation in eukaryotic cells.

**Subcellular location:** Nucleus

**Data Link:** UniProtKB [P49731](#) (*S. pombe*)



**Fig.1 Western Blot of Mcm6 / Mis5 protein**

Anti-Mcm6 / Mis5 antibody was used at 1/500 dilution. Second antibody (goat anti-rabbit IgG antibody HRP-conjugated, ab97051) was used at 1/10,000 dilution. *S. pombe* extract, 8 µg.

The antibody detects a protein band of 110 kDa, slightly larger than the one predicted from the protein sequence 95.5kDa (Ref. Ogawa Y et al)

**References:** This product has been used in the following publications.

Hayashi M et al. Genome-wide localization of pre-RC sites and identification of replication origins in fission yeast. *EMBO J.* 2007, Mar;26(5): 1327-39. PMID: [17304213](#) .ChIP (*S. pombe*)

Nakajima R, Masukata H. SpSld3 is required for loading and maintenance of SpCdc45 on chromatin in DNA replication in fission yeast. Mol. Biol. Cell. 2002, May;13(5):1462-72. PMID: [12006645](#) WB, IP (*S. pombe*)

Ogawa Y et al. Association of Fission Yeast Orp1 and Mcm6 Proteins with Chromosomal Replication Origins. Mol. Cell. Biol. 1999, Oct;19(10):7228-36. PMID: [10490657](#) WB, IP, IF (*S. pombe*)

**Related Products:**

63-020 Anti-Mcm2 (*S. pombe*) antibody

63-021 Anti-Mcm3 (*S. pombe*) antibody

63-022 Anti-Mcm5 (*S. pombe*) antibody

63-024 Anti-Mcm7 (*S. pombe*) antibody

63-030 Anti-Psf1 (*S. pombe*) antibody

63-032 Anti-Psf3 (*S. pombe*) antibody

63-035 Anti-Sld5 (*S. pombe*) antibody

63-037 Anti-Ssb2 / Rpa2 (*S.pombe*) antibody

63-041 Anti-Orc2 (*S. pombe*) antibody

63-043 Anti-Orc4 (*S. pombe*) antibody

63-050 Anti-Cdc45 Sna41 (*S. pombe*) antibody