

Anti-Sld5 (*S. pombe*) antibody, rabbit serum

63-035 100 µl

Shipping and Storage: Shipped at 4°C or -20°C and store at -20°C.

Immunogen: Recombinant His6 *S. pombe* Sld5 protein (full size).

Form: Rabbit antiserum added with sodium azide, 0.09 %.

Reactivity: with *S. pombe* Sld5 protein (MW: 25k).

Application:

Western blot (1/1000-1/2000)

Background: Sld5 is a component of GINS complex which plays an essential role in the initiation of DNA replication. Has a role in chromosome segregation and is required for bir1 localization.

Subcellular location: Nucleus

Data Link: UniProtKB [Q9P7C8](#) (*S. pombe*)

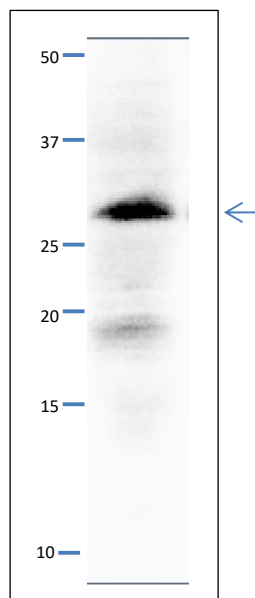


Fig.1 Western Blot of Sld3 protein

Anti-Sld5 antibody was used at 1/500 dilution. Second antibody (goat anti-rabbit IgG antibody HRP-conjugated, ab97051) was used at 1/10,000 dilution. *S. pombe* extract, 8 µg. Signal enhancer, Can Get Signal (TOYOBO, Osaka), was used in primary and secondary antibody reactions.

The antibody detects a 27 kDa band, slightly larger than the one predicted from the protein sequence, 25 kDa.

References: This product has been used in the following publications.

Pai CC et al. GINS inactivation phenotypes reveal two pathways for chromatin association of replicative alpha and epsilon DNA polymerases in fission yeast. *Mol. Biol. Cell.* 2009, Feb;20(4):1213-22. PMID: [19109429](#). **WB: *S. pombe*.**

Yabuuchi H et al. Ordered assembly of Sld3, GINS and Cdc45 is distinctly regulated by DDK and CDK for activation of replication origins. *EMBO J.* 2006, Oct;25(19):4663-74. PMID: [16990792](#). **WB: *S. pombe*.**

Related Products:

- 63-020 Anti-Mcm2 (*S. pombe*) antibody
- 63-021 Anti-Mcm3 (*S. pombe*) antibody
- 63-022 Anti-Mcm5 (*S. pombe*) antibody
- 63-023 Anti-Mcm6 (*S. pombe*) antibody
- 63-024 Anti-Mcm7 (*S. pombe*) antibody
- 63-030 Anti-Psf1 (*S. pombe*) antibody.
- 63-032 Anti-Psf3 (*S. pombe*) antibody
- 63-037 Anti-Ssb2 / Rpa2 (*S.pombe*) antibody
- 63-041 Anti-Orc2 (*S. pombe*) antibody
- 63-043 Anti-Orc4 (*S. pombe*) antibody
- 63-050 Anti-Cdc45 Sna41 (*S. pombe*) antibody