

## Anti-Cdc45 / Sna41 (*S. pombe*) antibody, rabbit polyclonal

63-050      100 µg

**Shipping and Storage:** Ship at 4°C or -20°C and store at -20°C. Do not freeze below -20°C

**Immunogen:** Recombinant His6 192-440 amino acids of *S. pombe* Cdc45.

**Form:** 2.0 mg/ml. IgG, affinity-purified with Protein A., in PBS<sup>-</sup> with 50% glycerol. Sterilized by ultra-filtration.

**Reactivity:** *S. pombe* Cdc45 protein

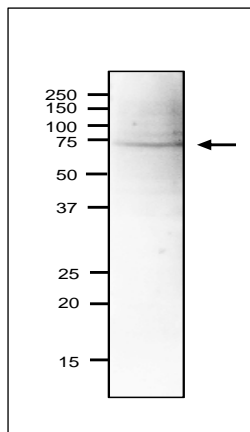
### Applications:

1. Western blot (1/2,000)
2. Immunoprecipitation (1/200)

**Background:** Required for initiation of chromosomal DNA replication. It may have a role in regulating the MCM proteins nda1 and nda4. Predicted Molecular Mass is 73.4 kDa with 638 amino acids.

**Subcellular location:** Nucleus

**Data Link:** UniProtKB [O74113 \(CDC45\\_SCHPO\)](#)



**Fig.1 Western blot of Sna41 protein in *S. pombe* crude extract**  
Anti-Sna41 antibody was used at 1/2000 dilution with CanGet signal (ToyoBo #NKB-101). Second antibody (goat anti-rabbit IgG antibody, HRP-conjugated, ab97051) was used at 1/10,000 dilution. *S. pombe* extract, 18 µg.

**References:** This product has been described in Ref 1 and used in the following publications.

1. Nakajima R, Masukata H. SpSld3 is required for loading and maintenance of SpCdc45 on chromatin in DNA replication in fission yeast. *Mol. Biol. Cell.* 2002, May;13(5):1462-72. PMID: [12006645](#) **WB, IP (*S. pombe*)**
2. Kanke M et al. Auxin-inducible protein depletion system in fission yeast. *BMC Cell Biol.* 2011 Feb 11;12:8. PMID: [21314938](#) . **WB (*S. pombe*)**

**Related Products:**

- 63-020 Anti-Mcm2 (*S. pombe*) antibody
- 63-021 Anti-Mcm3 (*S. pombe*) antibody
- 63-022 Anti-Mcm5 (*S. pombe*) antibody
- 63-023 Anti-Mcm6 (*S. pombe*) antibody
- 63-024 Anti-Mcm7 (*S. pombe*) antibody
- 63-030 Anti-Psf1 (*S. pombe*) antibody
- 63-032 Anti-Psf3 (*S. pombe*) antibody
- 63-035 Anti-Sld5 (*S. pombe*) antibody
- 63-037 Anti-Ssb2 / Rpa2 (*S.pombe*) antibody
- 63-041 Anti-Orc2 (*S. pombe*) antibody
- 63-043 Anti-Orc4 (*S. pombe*) antibody