

## Anti-Gtr2 (*S. cerevisiae*) antibody, rabbit serum

62-351 100 µl

**Shipping and Storage:** Shipped at 4°C or -20°C and store at -20°C.

**Immunogen:** Purified Full-length yeast Gtr2 protein fused with GST

**Form:** Anti-Gtr2 rabbit serum added with 0.05% sodium azide.

**Reactivity:** Reacts with *S. cerevisiae* Gtr2 protein

### Applications

1) Western blotting ( 500~ 2,000 folds dilution) Not

tested for other applications

**Background:** Gtr2 (341 amino acids, 38.6 kDa) is the yeast homologue of RagC identified in yeast and classified as a Ras-like small GTPase subfamily. In cytoplasm, GTP-bound Gtr2 forms a heterodimer with Gtr1, which is involved in autophagy through mTOR signal pathway.

**Data Link** UniProtKB/Swiss-Prot: [P53290](#) (GTR2\_YEAST)

### References :

1. Sekiguchi T *et al* "A novel human nucleolar protein Nop132, binds to the G proteins, RAG A/C/D" *J. Biol. Chem.* 279,; 8343-8350 (2004) PMID: [14660641](#)

2. Yasemin S *et al* "The Rag GTPases bind raptor and

mediate amino acid signaling to mTORC1" *Science.* 320(5882): 1496-1501 (2008) PMID: [18497260](#)

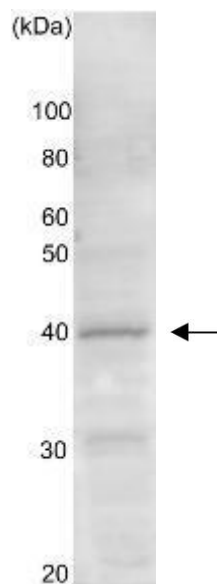


Fig.1 Western blot analysis of Gtr2 protein in the whole cell extract of *S. cerevisiae* (10 mg). Anti-Gtr2 antibody was used at 1/ 1,000 dilution.