

Anti-*Pasteurella multocida* Toxin antibody, rabbit polyclonal

Product code	64-105
Size	200 µg
Storage	-20°C
Concentration	2.0 mg/ml
Buffer	PBS ⁻ with 50% glycerol
Purity	Purified IgG fraction with protein A from rabbit antiserum.
Immunogen	Purified recombinant <i>Pasteurella multocida</i> toxoid (His6-tagged at N-terminus of full-size PMT, BioAcademia 01-507)
Isotype	Rabbit IgG
Reactivity	<i>P. multocida</i> Toxin
Special notes	N/A
Application	<ol style="list-style-type: none"> 1. Western blotting (1/500-1/1,000 dilution) 2. Dot blot (assay dependent) 3. ELISA (assay dependent) Other applications have not been tested.
Background	<p><i>Pasteurella multocida</i> toxin (PMT) is produced by a gram-negative bacillus, <i>Pasteurella multocida</i>. PMT activates the Gq and G_{12/13} dependent signaling pathways. Gq and G_{12/13} are alpha subunits of the GTP trimer bound protein of animal cells. This toxin binds to a ganglioside-type cell surface receptor, acts intracellularly after having been internalized through an endocytic pathway, and has pleiotropic effects on cell physiology.</p>
Data Link	UniProtKB/Swiss-Prot P17452 (TOXA_PASMU)
Please note: All products are FOR RESEARCH USE ONLY. NOT FOR USE IN DIAGNOSTIC PROCEDURES. NOT FOR MILITARY USE.	

Data Images: 64-105 Anti-*Pasteurella multocida* Toxin antibody, rabbit polyclonal

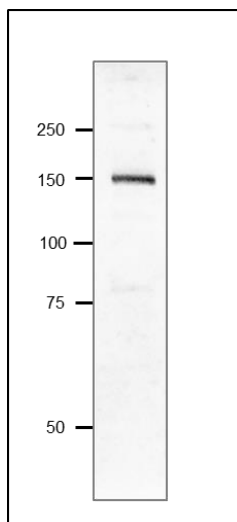


Fig.1. Western blot of *P. multocida* Toxin.

Sample: Recombinant *P. multocida* Toxin, 7.4 ng

Anti-PMT antibody was used at 1/1,000 dilution.

As second antibody, HRP conjugated goat anti-rabbit IgG (ab 97051) was used at 1/20,000 dilution.

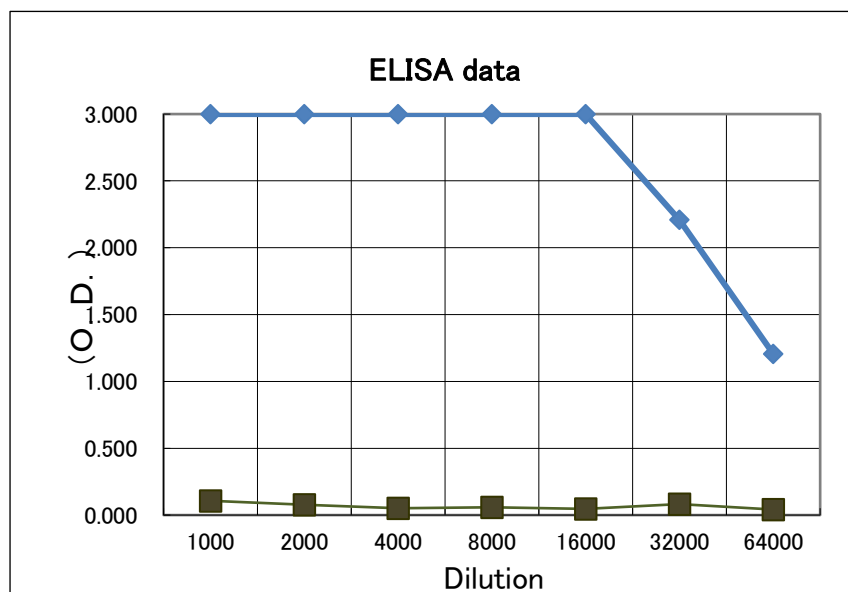


Fig.2. Indirect ELISA of *P. multocida* Toxin.

Plate was coated with 0.2 µg of recombinant *P. multocida* toxin (BioAcademia 01-507) per well and 100 µl of anti-*P. multocida* toxin serum at the indicated dilution was added to each well and incubated. After washing, goat anti-rabbit-IgG conjugated with HRP was added as a secondary antibody. Color was developed with TMB as substrate. After washing, goat anti-rabbit-IgG conjugated with HRP was added as a secondary antibody. Color was developed with TMB as substrate. Black boxes are data with pre-immune serum.