

Anti-Rfa3/Rpa3 (*S. cerevisiae*) antibody, rabbit serum

Product code	62-152
Size	50 µl
Storage	Store at 4°C for short term. For long term storage store at -20°C. Aliquot to avoid repeated freezing and thawing.
Concentration	N/A
Buffer	0.05% sodium azide
Purity	Rabbit antiserum
Immunogen	Recombinant Rfa3 protein
Isotype	Rabbit IgG
Reactivity	<i>S. cerevisiae</i> Rfa3 protein Not tested with other species.
Special notes	N/A
Application	1. Western blotting (1/2000) Not tested for other applications
Background	Subunit of heterotrimeric Replication Protein A (RPA); RPA is a highly conserved single-stranded DNA binding protein complex involved in DNA replication, repair, recombination; RPA protects against inappropriate telomere recombination, and upon telomere uncapping, prevents cell proliferation by a checkpoint-independent pathway; with Sgs1p-Top2p-Rmi1p, stimulates DNA catenation/decatenation activity of Top3p; protein abundance increases in response to DNA replication stress. RFA3 encodes 122 amino acids with molecular mass of 13,816.
Data Link	SGD RFA3/overview RFA3 / YJL173C UniProtKB P26755 (RFA3_YEAST)
Please note: All products are FOR RESEARCH USE ONLY. NOT FOR USE IN DIAGNOSTIC PROCEDURES. NOT FOR MILITARY USE.	

Data Images: 62-152 Anti-Rfa3/Rpa3 (*S. cerevisiae*) antibody, rabbit serum

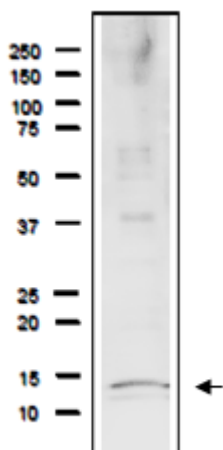


Fig.1 Detection of endogenous Rfa3 protein in whole cell extract of *S.cerevisiae*.

The extract of strain BY4741 (20 µg) was separated on SDS-PAGE 10-20% gradient gel. The anti-Rfa1 antibody was used at 1/2,000 dilution. As the second antibody, HRP-conjugated goat anti-rabbit IgG (ab97051) was used at 1/10,000 dilution. Molecular mass is 13.8 kDa

Reference: This antibody has not been used in publication.