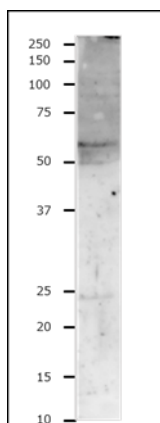


## Anti-NKAP-L antibody, rabbit polyclonal

<b>Product code</b>	73-085
<b>Size</b>	100 µg
<b>Storage</b>	-20°C
<b>Concentration</b>	1.0 mg/ml
<b>Buffer</b>	PBS <sup>-</sup> with 50% glycerol
<b>Purity</b>	Purified IgG fraction with protein A from rabbit antiserum
<b>Immunogen</b>	mouse NKAPL peptide ESPPSALQTSRSPR
<b>Isotype</b>	Rabbit IgG
<b>Reactivity</b>	mouse
<b>Special notes</b>	
<b>Application</b>	1. Western blotting (1-10µg/ml) 2. Immunofluorescence staining (1/100~1/800 dilution)
<b>Background</b>	NKAP-like protein (NKAP-L) functions as part of transcriptional repressor of Notch-mediated signaling. And NKAP-L is required for spermatogenesis. <b>Molecular mass:</b> 44.8 kDa. Detected 52 kDa in mouse testis by WB.
<b>Data Link</b>	UniPlotKB <a href="#">Q5SZT7</a> (NKAPL_MOUSE)
Please note: All products are FOR RESEARCH USE ONLY. NOT FOR USE IN DIAGNOSTIC PROCEDURES. NOT FOR MILITARY USE.	

**Data Images:** 73-085 Anti-NKAP-L antibody, rabbit polyclonal



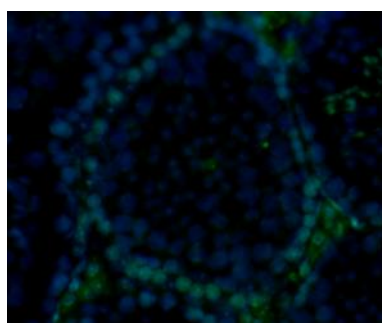
**Fig.1 Western Blot of NKAP-L protein**

Applied sample; 50µg of mouse testis whole lysate.

Primary antibody; 1µg/ml of anti-NKAP-L antibody

Secondary antibody; 1/10,000 dilution of goat anti-rabbit IgG antibody HRP-conjugated, ab97051)

Molecular mass of NKAP-L; 52 kDa



**Fig.2 Immunohistochemistry for NKAP-L protein in mouse testis tissue**

The anti NKAP-L antibody was used at 50µg/ml (Alexa Fluor 488).

Nuclear DNA was labelled in blue with DAPI.

Samples were paraffin embedded sections.

**Reference:** This product has been used in the following publication.

1. Okuda H, Tanaka H *et al.* A Novel Transcriptional Factor Nkapl Is a Germ Cell-Specific Suppressor of Notch Signaling and Is Indispensable for Spermatogenesis. PLoS One, Apr 14; 10(4)e0124293 (2015). PMID: [25875095](https://pubmed.ncbi.nlm.nih.gov/25875095/). **WB, IF**