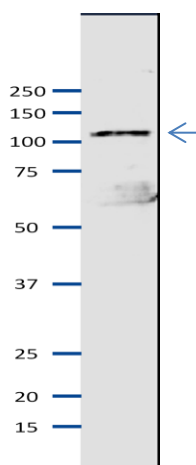


## Anti-Mcm2 (*S.pombe*) antibody, rabbit polyclonal

<b>Product code</b>	63-020
<b>Size</b>	100 µg
<b>Storage</b>	-20°C
<b>Concentration</b>	2.0 mg/ml
<b>Buffer</b>	PBS <sup>-</sup> with 50% glycerol
<b>Purity</b>	Purified IgG fraction with protein A from rabbit antiserum.
<b>Immunogen</b>	Recombinant His6 202-527 amino acids of <i>S. pombe</i> Mcm2.
<b>Isotype</b>	Rabbit IgG
<b>Reactivity</b>	<i>S. pombe</i> Mcm2 protein (MW: 92.8 K).
<b>Special notes</b>	N/A
<b>Application</b>	<ol style="list-style-type: none"> <li>1. Western blot (1/1,000-1/2,000)</li> <li>2. Chromatin Immuno-Precipitation</li> <li>3. Immunoprecipitation</li> </ol>
<b>Background</b>	<p>Mcm2 acts as a component of mcm2-7 complex which is the putative replicative helicase essential for 'once per cell cycle' DNA replication initiation and elongation in eukaryotic cells. Predicted molecular mass, 92.8 kDa with 830 amino acids.</p> <p>Subcellular location: Nucleus</p>
<b>Data Link</b>	UniProtKB <a href="#">40377</a> ( <i>S. pombe</i> Mcm2)
Please note: All products are FOR RESEARCH USE ONLY. NOT FOR USE IN DIAGNOSTIC PROCEDURES. NOT FOR MILITARY USE.	

**Data Images:** 63-020 Anti-Mcm2 (*S.pombe*) antibody, rabbit polyclonal



**Fig.1 Western blot of Mcm2 protein in *S. pombe* crude extract**

Anti-Mcm2 antibody was used at 1/2000 dilution. Second antibody (goat anti-rabbit IgG antibody, HRP-conjugated, ab97051) was used at 1/10,000 dilution. *S. pombe* extract, 8  $\mu$ g.

**References:** This product has been used in the following publications.

1. Hayashi M et al. Genome-wide localization of pre-RC sites and identification of replication origins in fission yeast. *EMBO J.* 2007, Mar;26(5): 1327-39. PMID: [17304213](#) .ChIP: **S. pombe**
2. Takahashi T et al. Multiple ORC-binding sites are required for efficient MCM loading and origin firing in fission yeast. *EMBO J.* 2003, Feb;22(4):964-74. PMID: [12574132](#) IP: **S. pombe**
3. Ogawa Y et al. Association of Fission Yeast Orp1 and Mcm6 Proteins with Chromosomal Replication Origins. *Mol. Cell. Biol.* 1999, Oct;19(10):7228-36. PMID: [10490657](#) WB, ChIP: **S. pombe**

### Related Products

- 63-021 Anti-Mcm3 (*S. pombe*) antibody
- 63-022 Anti-Mcm5 (*S. pombe*) antibody
- 63-023 Anti-Mcm6 (*S. pombe*) antibody
- 63-024 Anti-Mcm7 (*S. pombe*) antibody
- 63-030 Anti-Psf1 (*S. pombe*) antibody
- 63-032 Anti-Psf3 (*S. pombe*) antibody
- 63-035 Anti-Sld5 (*S. pombe*) antibody
- 63-037 Anti-Ssb2 / Rpa2 (*S.pombe*) antibody
- 63-041 Anti-Orc2 (*S. pombe*) antibody
- 63-043 Anti-Orc4 (*S. pombe*) antibody