

Anti-Mcm5 (*S. pombe*) antibody, rabbit polyclonal

Product code	63-022
Size	100 µg
Storage	-20°C
Concentration	2.0 mg/ml
Buffer	PBS ⁻ with 50% glycerol
Purity	Purified IgG fraction with protein A from rabbit antiserum.
Immunogen	Recombinant His6-Mcm5 (1-279 amino acids) of <i>S. pombe</i> .
Isotype	Rabbit IgG
Reactivity	<i>S. pombe</i> Mcm5 protein
Special notes	N/A
Application	1. Western blotting (1/2000) Not tested for other applications.
Background	Mcm5 acts as a component of mcm2-7 complex which is the putative replicative helicase essential for 'once per cell cycle' DNA replication initiation and elongation in eukaryotic cells. (Calculated Molecular Mass: 80.1 kDa) Subcellular location: Nucleus
Data Link	UniProtKB 41389 (<i>S. pombe</i> Mcm5)
Please note: All products are FOR RESEARCH USE ONLY. NOT FOR USE IN DIAGNOSTIC PROCEDURES. NOT FOR MILITARY USE.	

Data Images: 63-022 Anti-Mcm5 (*S. pombe*) antibody, rabbit polyclonal

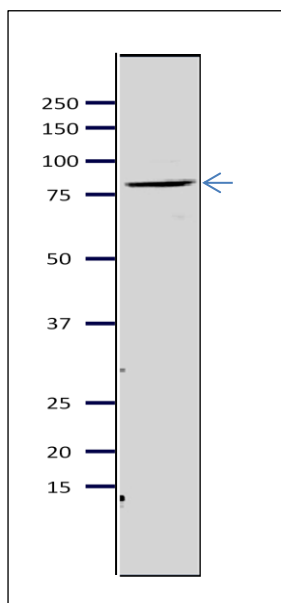


Fig.1 Western blot of Mcm5 protein in *S. pombe* crude extract

Anti-Mcm5 antibody was used at 1/2000 dilution. Second antibody (goat anti-rabbit IgG antibody, HRP-conjugated, ab97051) was used at 1/10,000 dilution. *S. pombe* extract, 8 μ g.

References: This product has been used in the following publications.

1. Yamada Y et al. A Novel Intermediate in Initiation Complex Assembly for Fission Yeast DNA Replication. [Mol Biol Cell](#). 2004 Aug;15(8):3740-50. PMID: [15194812](#). **WB (*S. pombe*)**
2. Kanke M et al. Auxin-inducible protein depletion system in fission yeast. [BMC Cell Biol](#). 2011 Feb 11;12:8. PMID: [21314938](#). **WB (*S. pombe*)**
3. Santosa V et al. The Fission Yeast Minichromosomal Maintenance (MCM)-binding Protein (MCM-BP), Mcb1, Regulates MCM Function during Prereplicative Complex Formation in DNA Replication. [J Biol Chem](#). 2013 Mar 8;288(10):6864-80. PMID: [23322785](#). **WB (*S. pombe*)**

Related Products.

- 63-020 Anti-Mcm2 (*S. pombe*) antibody
- 63-021 Anti-Mcm3 (*S. pombe*) antibody
- 63-023 Anti-Mcm6 (*S. pombe*) antibody
- 63-024 Anti-Mcm7 (*S. pombe*) antibody
- 63-030 Anti-Psf1 (*S. pombe*) antibody
- 63-032 Anti-Psf3 (*S. pombe*) antibody
- 63-035 Anti-Sld5 (*S. pombe*) antibody

63-037 Anti-Ssb2 / Rpa2 (*S.pombe*) antibody

63-041 Anti-Orc2 (*S. pombe*) antibody

63-043 Anti-Orc4 (*S. pombe*) antibody