

Anti-Mcm6 (*S. pombe*) antibody, rabbit serum

Product code	63-023
Size	100 µl
Storage	Store 4°C for short term For long term storage store at -20°C. Aliquot to avoid repeated freezing and thawing.
Concentration	N/A
Buffer	0.09% sodium azide
Purity	Rabbit antiserum
Immunogen	Recombinant His6 tagged 43-458 amino acids of <i>S. pombe</i> Mcm6 / Mis5 protein.
Isotype	Rabbit IgG
Reactivity	<i>S. pombe</i> Mcm6 / Mis5 protein (MW: 95.5 kDa)
Special notes	N/A
Application	<ol style="list-style-type: none"> 1. Western blotting (1/500-1/1,000) 2. Immunoprecipitation (1/100 -1/300) 3. Chromatin Immuno-Precipitation (Assay dependent) 4. Immuno-Fluorescence Staining (Assay dependent)
Background	<p>Mcm3 / Mis5 acts as a component of mcm2-7 complex which is the putative replicative helicase essential for 'once per cell cycle' DNA replication initiation and elongation in eukaryotic cells. (Mass: 97.5 kDa).</p> <p>Subcellular location: Nucleus</p>
Data Link	UniProtKB P49731 (<i>S. pombe</i>)
Please note: All products are FOR RESEARCH USE ONLY. NOT FOR USE IN DIAGNOSTIC PROCEDURES. NOT FOR MILITARY USE.	

Data Images: 63-023 Anti-Mcm6 (*S. pombe*) antibody, rabbit serum

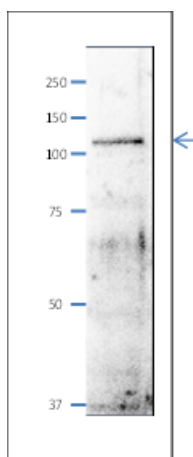


Fig.1 Western Blot of Mcm6 / Mis5 protein

Anti-Mcm6 / Mis5 antibody was used at 1/500 dilution. Second antibody (goat anti-rabbit IgG antibody HRP-conjugated, ab97051) was used at 1/10,000 dilution. *S. pombe* extract, 8 µg.

The antibody detects a protein band of 110 kDa, slightly larger than the one predicted from the protein sequence 95.5kDa (Ref. Ogawa Y et al)

References: This product has been used in the following publications.

1. Hayashi M et al. Genome-wide localization of pre-RC sites and identification of replication origins in fission yeast. EMBO J. 2007, Mar;26(5): 1327-39. PMID: [17304213](#) .ChIP (*S. pombe*)
2. Nakajima R, Masukata H. SpSld3 is required for loading and maintenance of SpCdc45 on chromatin in DNA replication in fission yeast. Mol. Biol. Cell. 2002, May;13(5):1462-72. PMID: [12006645](#) WB, IP (*S. pombe*)
3. Ogawa Y et al. Association of Fission Yeast Orp1 and Mcm6 Proteins with Chromosomal Replication Origins. Mol. Cell. Biol. 1999, Oct;19(10):7228-36. PMID: [10490657](#) WB, IP, IF (*S. pombe*)

Related Products:

- 63-020 Anti-Mcm2 (*S. pombe*) antibody
- 63-021 Anti-Mcm3 (*S. pombe*) antibody
- 63-022 Anti-Mcm5 (*S. pombe*) antibody
- 63-024 Anti-Mcm7 (*S. pombe*) antibody
- 63-030 Anti-Psf1 (*S. pombe*) antibody
- 63-032 Anti-Psf3 (*S. pombe*) antibody
- 63-035 Anti-Sld5 (*S. pombe*) antibody
- 63-037 Anti-Ssb2 / Rpa2 (*S.pombe*) antibody
- 63-041 Anti-Orc2 (*S. pombe*) antibody
- 63-043 Anti-Orc4 (*S. pombe*) antibody
- 63-050 Anti-Cdc45 / Sna41 (*S. pombe*) antibody