

Anti-Psf1 (*S. pombe*) antibody, rabbit serum

Product code	63-030
Size	100 µl
Storage	Store 4°C for short term For long term storage store at -20°C. Aliquot to avoid repeated freezing and thawing.
Concentration	N/A
Buffer	0.09% sodium azide
Purity	Rabbit antiserum
Immunogen	Recombinant His6 1-202 amino acids of <i>S. pombe</i> Psf1 protein.
Isotype	Rabbit IgG
Reactivity	<i>S. pombe</i> Psf1 protein
Special notes	N/A
Application	1. Western blotting (1/500-1/1,000) 2. Immunoprecipitation (Assay dependent)
Background	<p>Psf1 is a component of GINS complex which is required for the initiation and elongation stages of DNA replication. Psf1 is required for maintenance, as well as establishment of Cdc45 binding and chromatin association of the Dpb4 subunit of Pole.</p> <p>Subcellular location: Nucleus</p>
Data Link	UniProtKB Q9P7X6 (<i>S. pombe</i> Psf1)
<p>Please note: All products are FOR RESEARCH USE ONLY. NOT FOR USE IN DIAGNOSTIC PROCEDURES. NOT FOR MILITARY USE.</p>	

Data Images: 63-030 Anti-Psf1 (*S. pombe*) antibody, rabbit serum

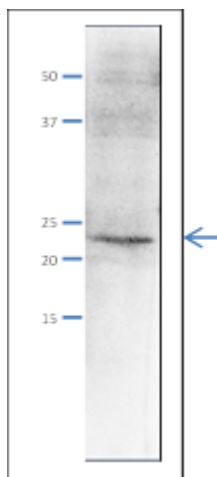


Fig.1 Western Blot of endogenous Psf1 protein

Anti-Psf1 antibody was used at 1/500 dilution. Second antibody (goat anti-rabbit IgG antibody, HRP-conjugated, ab97051) was used at 1/10,000 dilution. *S. pombe* extract, 8 µg.

The antibody detects the 23 kDa band, corresponding to the predicted molecular mass of Psf1 protein.

References: This product has been used in the following publications.

1. Yabuuchi H et al. Ordered assembly of Sld3, GINS and Cdc45 is distinctly regulated by DDK and CDK for activation of replication origins. EMBO J. 2006, Oct;25(19):4663-74. PMID: [16990792](#).
WB (*S.pombe*)
2. Pai CC, García I, Wang SW, Cotterill S, Macneill SA, Kearsy SE. GINS inactivation phenotypes reveal two pathways for chromatin association of replicative alpha and epsilon DNA polymerases in fission yeast." Mol. Biol. Cell. 2009, Feb;20(4):1213-22.PMID: [19109429](#).**IF (*S.pombe*)**

Related Products:

- 63-020 Anti-Mcm2 (*S. pombe*) antibody
- 63-021 Anti-Mcm3 (*S. pombe*) antibody
- 63-022 Anti-Mcm5 (*S. pombe*) antibody
- 63-023 Anti-Mcm6 (*S. pombe*) antibody
- 63-024 Anti-Mcm7 (*S. pombe*) antibody
- 63-032 Anti-Psf3 (*S. pombe*) antibody
- 63-035 Anti-Sld5 (*S. pombe*) antibody
- 63-037 Anti-Ssb2 / Rpa2 (*S. pombe*) antibody
- 63-041 Anti-Orc2 (*S. pombe*) antibody
- 63-043 Anti-Orc4 (*S. pombe*) antibody
- 63-050 Anti-Cdc45 / Sna41 (*S. pombe*) antibody