

Anti-Psf3 (*S. pombe*) antibody, rabbit serum

Product code	63-032
Size	100 µl
Storage	Store 4°C for short term For long term storage store at -20°C. Aliquot to avoid repeated freezing and thawing.
Concentration	N/A
Buffer	0.09% sodium azide
Purity	Rabbit antiserum
Immunogen	Recombinant His6-Psf3 protein (full size) of <i>S. pombe</i>
Isotype	Rabbit IgG
Reactivity	<i>S. pombe</i> Psf3 protein (18.5kDa)
Special notes	N/A
Application	1. Western blotting (1/1000-1/2000)
Background	Psf3 is a component of GINS complex which is required for the initiation and elongation stages of DNA replication. Subcellular location: Nucleus
Data Link	UniProtKB Q9UTC3 (S. pombe Psf3)
Please note: All products are FOR RESEARCH USE ONLY. NOT FOR USE IN DIAGNOSTIC PROCEDURES. NOT FOR MILITARY USE.	

Data Images: 63-030 Anti-Psf1 (*S. pombe*) antibody, rabbit serum

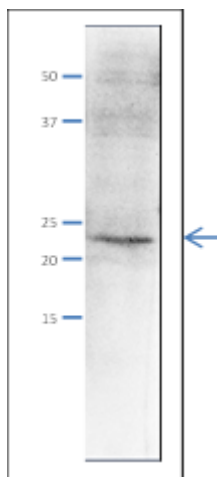


Fig.1 Western Blot of endogenous Psf1 protein

Anti-Psf1 antibody was used at 1/500 dilution. Second antibody (goat anti-rabbit IgG antibody, HRP-conjugated, ab97051) was used at 1/10,000 dilution. *S. pombe* extract, 8 µg.

The antibody detects the 23 kDa band, corresponding to the predicted molecular mass of Psf1 protein.

References: This product has been used in the following publications.

1. Yabuuchi H et al. Ordered assembly of Sld3, GINS and Cdc45 is distinctly regulated by DDK and CDK for activation of replication origins. EMBO J. 2006, Oct;25(19):4663-74. PMID: [16990792](https://pubmed.ncbi.nlm.nih.gov/16990792/).
WB (*S.pombe*)
2. Pai CC, García I, Wang SW, Cotterill S, Macneill SA, Kearsley SE. GINS inactivation phenotypes reveal two pathways for chromatin association of replicative alpha and epsilon DNA polymerases in fission yeast." Mol. Biol. Cell. 2009, Feb;20(4):1213-22. PMID: [19109429](https://pubmed.ncbi.nlm.nih.gov/19109429/).
IF (*S.pombe*)

Related Products:

- 63-020 Anti-Mcm2 (*S. pombe*) antibody
- 63-021 Anti-Mcm3 (*S. pombe*) antibody
- 63-022 Anti-Mcm5 (*S. pombe*) antibody
- 63-023 Anti-Mcm6 (*S. pombe*) antibody
- 63-024 Anti-Mcm7 (*S. pombe*) antibody
- 63-032 Anti-Psf3 (*S. pombe*) antibody
- 63-035 Anti-Sld5 (*S. pombe*) antibody
- 63-037 Anti-Ssb2 / Rpa2 (*S. pombe*) antibody
- 63-041 Anti-Orc2 (*S. pombe*) antibody
- 63-043 Anti-Orc4 (*S. pombe*) antibody
- 63-050 Anti-Cdc45 / Sna41 (*S. pombe*) antibody