

Anti-Rfa1/Rpa1 (*S. cerevisiae*) antibody, rabbit serum

62-150 100 μ l

Shipping and Storage: Shipped at 4°C or -20°C and store at -20°C.

Immunogen: Recombinant Rfa1 protein

Form: Rabbit antiserum added with 0.05% sodium azide.

Applications: Western blotting (1/2,000 dilution). Immunoprecipitation (1/200)

Reactivity: *S. cerevisiae* Rfa1 protein.

Background: Rfa1 (Replication Factor A protein 1) as part of the replication protein A (RPA/RP-A), a single-stranded DNA-binding heterotrimeric complex, may play an essential role in DNA replication, recombination and repair. Binds and stabilizes single-stranded DNA intermediates, preventing complementary DNA reannealing and recruiting different proteins involved in DNA metabolism. Binds to single-stranded sequences participating in DNA replication in addition to those mediating transcriptional repression (URS1) and activation (CAR1). Stimulates the activity of a cognate strand exchange protein (SEP1). It cooperates with T-AG and DNA topoisomerase I to unwind template DNA containing the simian virus 40 origin of DNA replication.

RFA encodes 621 amino acids with molecular mass of 70,348

Data Link: UniProtKB [P22336](#) (RFA1_YEAST), SGD [S000000065](#) RFA1 / YAR007C

Reference: This antibody has not been used in publication.

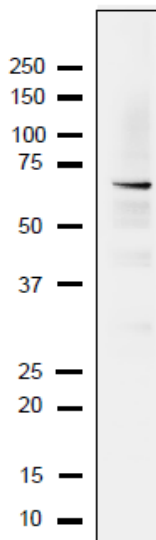


Fig. Detection of endogenous Rfa1 protein in whole cell extract of *S.cerevisiae*.

The extract of strain BY4741 (10 μ g) was separated on SDS-PAGE 10-20% gradient gel. The anti-Rfa1 antibody was used at 1/2,000 dilution. As the second antibody, HRP-conjugated goat anti-rabbit IgG (ab97051) was used at 1/10,000 dilution

Please note: All products are FOR RESEARCH USE ONLY. NOT FOR USE IN DIAGNOSTIC PROCEDURES. NOT FOR MILITARY USE.