

Anti-Sld5 (*S. pombe*) antibody, rabbit serum

Product code	63-035
Size	100 µl
Storage	Store 4°C for short term For long term storage store at -20°C. Aliquot to avoid repeated freezing and thawing.
Concentration	N/A
Buffer	0.09% sodium azide
Purity	Rabbit antiserum
Immunogen	Recombinant His6 <i>S. pombe</i> Sld5 protein (full size).
Isotype	Rabbit IgG
Reactivity	<i>S. pombe</i> Psf3 protein (18.5kDa)
Special notes	N/A
Application	1. Western blotting (1/1000-1/2000)
Background	Sld5 is a component of GINS complex which plays an essential role in the initiation of DNA replication. Has a role in chromosome segregation and is required for bir1 localization. Subcellular location: Nucleus
Data Link	UniProtKB Q9P7C8 (<i>S. pombe</i>)
Please note: All products are FOR RESEARCH USE ONLY. NOT FOR USE IN DIAGNOSTIC PROCEDURES. NOT FOR MILITARY USE.	

Data Images: 63-035 Anti-Sld5 (*S. pombe*) antibody, rabbit serum

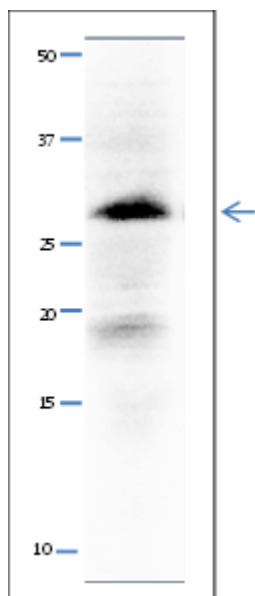


Fig.1 Western Blot of Sld3 protein

Anti-Sld5 antibody was used at 1/500 dilution. Second antibody (goat anti-rabbit IgG antibody HRP-conjugated, ab97051) was used at 1/10,000 dilution. *S. pombe* extract, 8 µg. Signal enhancer, Can Get Signal (TOYOBO, Osaka), was used in primary and secondary antibody reactions.

The antibody detects a 27 kDa band, slightly larger than the one predicted from the protein sequence, 25 kDa.

References: This product has been used in the following publications.

1. Pai CC et al. GINS inactivation phenotypes reveal two pathways for chromatin association of replicative alpha and epsilon DNA polymerases in fission yeast. *Mol. Biol. Cell.* 2009, Feb;20(4):1213-22. PMID: [19109429](#). **WB: *S. pombe***
2. Yabuuchi H et al. Ordered assembly of Sld3, GINS and Cdc45 is distinctly regulated by DDK and CDK for activation of replication origins. *EMBO J.* 2006, Oct;25(19):4663-74. PMID: [16990792](#). **WB: *S. pombe***

Related Products:

- 63-020 Anti-Mcm2 (*S. pombe*) antibody
- 63-021 Anti-Mcm3 (*S. pombe*) antibody
- 63-022 Anti-Mcm5 (*S. pombe*) antibody
- 63-023 Anti-Mcm6 (*S. pombe*) antibody
- 63-024 Anti-Mcm7 (*S. pombe*) antibody
- 63-030 Anti-Psf1 (*S. pombe*) antibody.
- 63-032 Anti-Psf3 (*S. pombe*) antibody
- 63-037 Anti-Ssb2 / Rpa2 (*S. pombe*) antibody

63-041 Anti-Orc2 (*S. pombe*) antibody

63-043 Anti-Orc4 (*S. pombe*) antibody

63-050 Anti-Cdc45 / Sna41 (*S. pombe*) antibody