

Anti-Orc2 (*S. pombe*) antibody, rabbit polyclonal

Product code	63-041
Size	100 µg
Storage	-20°C
Concentration	2.0 mg/ml
Buffer	PBS ⁻ with 50% glycerol
Purity	Purified IgG fraction with protein A from rabbit antiserum.
Immunogen	Recombinant His6 1-175 amino acids of <i>S. pombe</i> Orc2.
Isotype	Rabbit IgG
Reactivity	<i>S. pombe</i> Orc2 protein
Special notes	N/A
Application	<ol style="list-style-type: none"> 1. Western blot (1/2,000 dilution) 2. Immunoprecipitation (1/200) 3. Chromatin Immunoprecipitation
Background	<p>Component of the origin recognition complex (ORC) that binds origins of replication. It has a role in both chromosomal replication and mating type transcriptional silencing. ORC binds to multiple sites within the ars1 origin of DNA replication in an ATP-independent manner. Predicted molecular mass 61 kDa. 535 amino acids</p> <p>Subcellular location: Nucleus</p>
Data Link	UniProtKB Q09142 (<i>S. pombe</i> Orc2)
Please note: All products are FOR RESEARCH USE ONLY. NOT FOR USE IN DIAGNOSTIC PROCEDURES. NOT FOR MILITARY USE.	

Data Images: 63-041 Anti-Orc2 (*S. pombe*) antibody, rabbit polyclonal

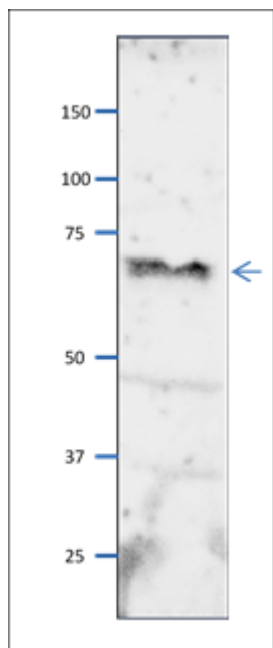


Fig.1 Western blot of Orc2 protein in *S. pombe* crude extract

Anti-Orc2 antibody was used at 1/2000 dilution. Second antibody (goat anti-rabbit IgG antibody, HRP-conjugated, ab97051) was used at 1/10,000 dilution. *S. pombe* extract, 8 µg.

References: This product has been used in the following publications.

1. Takahashi T et al. Multiple ORC-binding sites are required for efficient MCM loading and origin firing in fission yeast. EMBO J. 2003, Feb;22 (4): 964-74. PMID: [12574132](https://pubmed.ncbi.nlm.nih.gov/12574132/). ChIP, IP ; *S. pombe*

Related Products:

- 63-020 Anti-Mcm2 (*S. pombe*) antibody
- 63-021 Anti-Mcm3 (*S. pombe*) antibody
- 63-022 Anti-Mcm5 (*S. pombe*) antibody
- 63-023 Anti-Mcm6 (*S. pombe*) antibody
- 63-024 Anti-Mcm7 (*S. pombe*) antibody
- 63-030 Anti-Psf1 (*S. pombe*) antibody
- 63-032 Anti-Psf3 (*S. pombe*) antibody
- 63-035 Anti-Sld5 (*S. pombe*) antibody
- 63-037 Anti-Ssb2 / Rpa2 (*S. pombe*) antibody
- 63-043 Anti-Orc4 (*S. pombe*) antibody