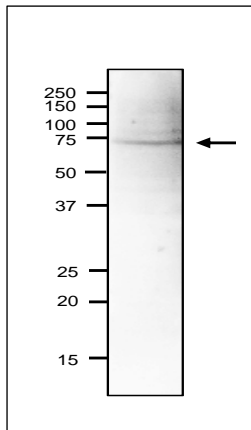


### Anti-Cdc45 / Sna41 (*S. pombe*) antibody, rabbit polyclonal

<b>Product code</b>	63-050
<b>Size</b>	100 µg
<b>Storage</b>	-20°C
<b>Concentration</b>	2.0 mg/ml
<b>Buffer</b>	PBS <sup>-</sup> with 50% glycerol
<b>Purity</b>	Purified IgG fraction with protein A from rabbit antiserum.
<b>Immunogen</b>	Recombinant His6 192-440 amino acids of <i>S. pombe</i> Cdc45.
<b>Isotype</b>	Rabbit IgG
<b>Reactivity</b>	<i>S. pombe</i> Cdc45 protein
<b>Special notes</b>	N/A
<b>Application</b>	1. Western blot (1/2,000) 2. Immunoprecipitation (1/200)
<b>Background</b>	Required for initiation of chromosomal DNA replication. It may have a role in regulating the MCM proteins nda1 and nda4. Predicted Molecular Mass is 73.4 kDa with 638 amino acids. Subcellular location: Nucleus
<b>Data Link</b>	UniProtKB <a href="#">O74113</a> (CDC45_SCHPO)
Please note: All products are FOR RESEARCH USE ONLY. NOT FOR USE IN DIAGNOSTIC PROCEDURES. NOT FOR MILITARY USE.	

**Data Images:** 63-050 Anti-Cdc45 / Sna41 (*S. pombe*) antibody, rabbit polyclonal



**Fig.1 Western blot of Sna41 protein in *S. pombe* crude extract**

Anti-Sna41 antibody was used at 1/2000 dilution with CanGet signal (ToyoBo #NKB-101). Second antibody (goat anti-rabbit IgG antibody, HRP-conjugated, ab97051) was used at 1/10,000 dilution. *S. pombe* extract, 18 µg.

**References:** This product has been described in Ref 1 and used in the following publications.

1. Nakajima R, Masukata H. SpSld3 is required for loading and maintenance of SpCdc45 on chromatin in DNA replication in fission yeast. *Mol. Biol. Cell.* 2002, May;13(5):1462-72. PMID: [12006645](#) **WB, IP (*S. pombe*)**
2. Kanke M et al. Auxin-inducible protein depletion system in fission yeast. *BMC CellBiol.* 2011 Feb 11;12:8. PMID: [21314938](#) . **WB (*S. pombe*)**

**Related Products:**

- 63-020 Anti-Mcm2 (*S.pombe*) antibody, rabbit polyclonal
- 63-021 Anti-Mcm3 (*S.pombe*) antibody, rabbit serum
- 63-022 Anti-Mcm5 (*S.pombe*) antibody, rabbit polyclonal
- 63-023 Anti-Mcm6 (*S.pombe*) antibody, rabbit serum
- 63-024 Anti-Mcm7 (*S.pombe*) antibody, rabbit polyclonal
- 63-030 Anti-Psf1 (*S.pombe*) antibody, rabbit serum
- 63-032 Anti-Psf3 (*S.pombe*) antibody, rabbit serum
- 63-035 Anti-Sld5 (*S.pombe*) antibody, rabbit serum
- 63-037 Anti-Ssb2 / Rpa2 (*S.pombe*) antibody, rabbit polyclonal
- 63-041 Anti-Orc2 (*S.pombe*) antibody, rabbit polyclonal
- 63-043 Anti-Orc4 (*S.pombe*) antibody, rabbit polyclonal