

Anti-Gtr2 (*S. cerevisiae*) antibody, rabbit serum

Product code	62-351
Size	100 µl
Storage	Store 4°C for short term For long term storage store at -20°C. Aliquot to avoid repeated freezing and thawing.
Concentration	N/A
Buffer	0.05% sodium azide
Purity	Rabbit antiserum
Immunogen	Purified Full-length yeast Gtr2 protein fused with GST
Isotype	Rabbit IgG
Reactivity	<i>S. cerevisiae</i> Gtr2, not tested with other species
Special notes	N/A
Application	1. Western blotting (1/500-1/ 2,000) Not tested for other applications.
Background	Gtr2 (341 amino acids, 38.6 kDa) is the yeast homologue of RagC identified in yeast and classified as a Ras-like small GTPase subfamily. In cytoplasm, GTP-bound Gtr2 forms a heterodimer with Gtr1, which is involved in autophagy through mTOR signal pathway.
Data Link	UniProtKB P53290 (GTR2_YEAST)
Please note: All products are FOR RESEARCH USE ONLY. NOT FOR USE IN DIAGNOSTIC PROCEDURES. NOT FOR MILITARY USE.	

Data Images: 62-351 Anti-Gtr2 (*S. cerevisiae*) antibody, rabbit serum

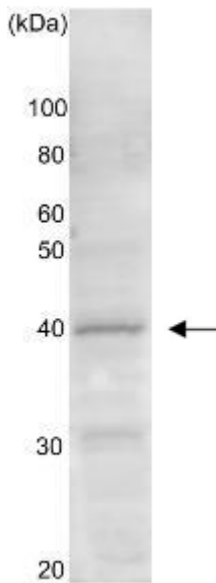


Fig.1 Western blot analysis of Gtr2 protein in the whole cell extract of *S. cerevisiae* (10 mg).
Anti-Gtr2 antibody was used at 1/ 1,000 dilution.

References:

1. Sekiguchi T. *et al.* A novel human nucleolar protein Nop132, binds to the G proteins, RRAG A/C/D"
J. Biol. Chem. 279,: 8343-8350 (2004) PMID: [14660641](https://pubmed.ncbi.nlm.nih.gov/14660641/)
2. Yasemin S. *et al.* The Rag GTPases bind raptor and mediate amino acid signaling to mTORC1.
Science. 320(5882): 1496-1501(2008) PMID: [18497260](https://pubmed.ncbi.nlm.nih.gov/18497260/)