

Anti-SCYL2/CVAK104 antibody, rabbit polyclonal

Product code	71-610
Size	50 µg
Storage	-20°C
Concentration	1.0 mg/ml
Buffer	PBS- with 50% glycerol
Purity	IgG, Salting-out and ion-exchange chromatography
Immunogen	Human SCYL2 protein (amino acids 528– 929) fused with a His6 tag
Isotype	Rabbit IgG
Reactivity	Human, mouse, rat and hamster.
Special notes	Validation: Specificity of reaction was validated with siRNA
Application	<ol style="list-style-type: none"> 1. Western blotting (1/1,000 dilution) 2. Immunoprecipitation (1/200-1/1,000 dilution) 3. Immunofluorescence staining (1/200-1/1,000 dilution)
Background	<p>Component of AP2-containing clathrin coated structures at the plasma membrane or of endocytic coated vesicles. According to PubMed:15809293, probable serine/threonine-protein kinase that phosphorylates, in vitro, the beta2-subunit of the plasma membrane adapter complex AP2 and other proteins in presence of poly-L-lysine. According to PubMed:16914521, has no detectable kinase activity in vitro. May regulate clathrin-dependent trafficking between the TGN and/or the endosomal system.</p>
Data Link	UniProtKB Q6P3W7 (SCYL2_HUMAN)
<p>Please note: All products are FOR RESEARCH USE ONLY. NOT FOR USE IN DIAGNOSTIC PROCEDURES. NOT FOR MILITARY USE.</p>	

Data Images: 71-610 Anti-SCYL2/CVAK104 antibody, rabbit polyclonal

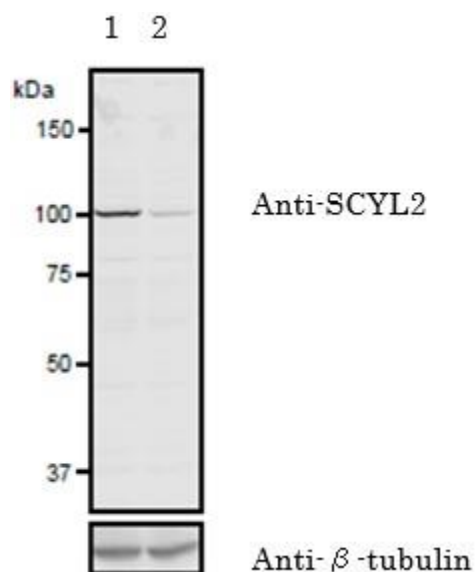


Fig.1 Validation of the anti-SCYL2 antibody with siRNA.in western blotting.

293 cells were treated with control of SCYL2-siRNA. At 48 h after transfection the lysates were analyzed by western blotting with anti-SCYL2 antibody or anti- β -tubulin antibody, the latter for a loading control.

Lane 1: Control siRNA

Lane 2: SCYL2-siRNA

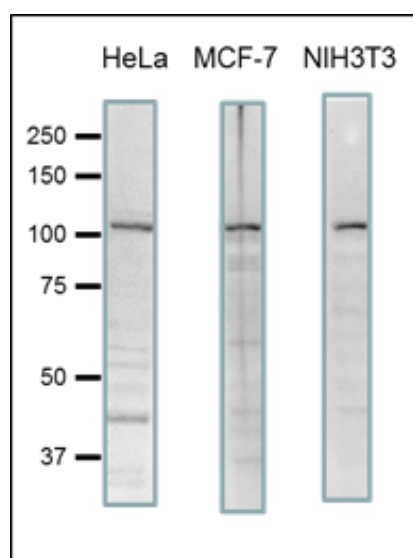


Fig.2. Detection of endogenous levels of SCYL2 in human and mouse cell extracts by western blotting.

20 μ g of lysates of HeLa, MCF7 and NIH3T3 cells were used for western blotting. 7.5% gel was used and blotted overnight in a wet system.

The anti-SCYL2 antibody was used at 1/1,000 dilution and as the 2nd antibody, goat anti-rabbit IgG (Abcam 97051) was used at 1/10,000 dilution.

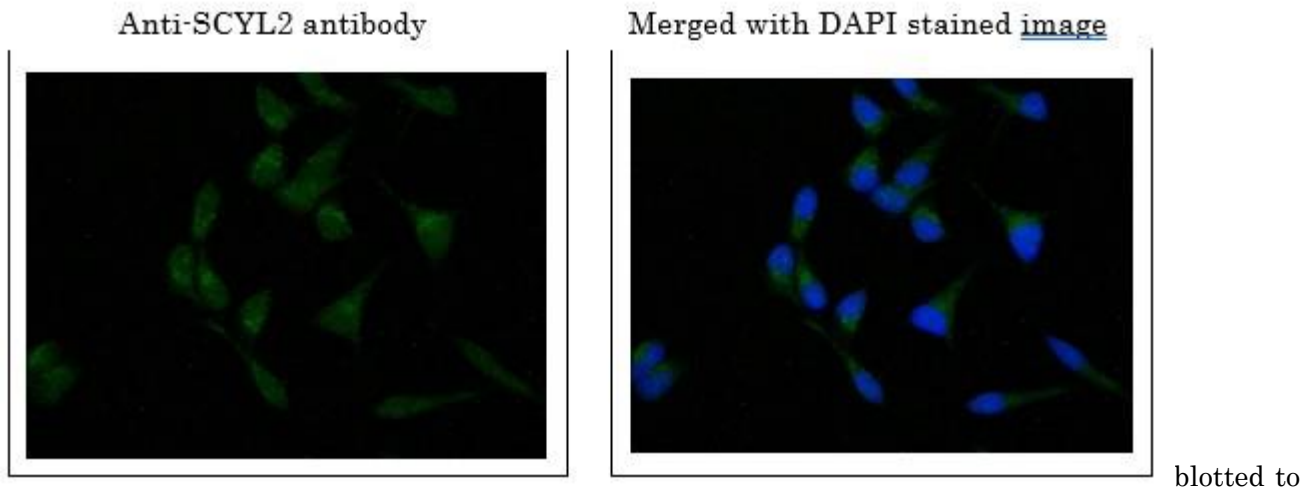


Fig.3 Immunofluorescence staining of SCYL2 in MCF7 cells.

MCF7 cells were fixed with 4% PFA and permeabilized with 0.25% Triton X-100 in PBS.

The anti-SCYL2 antibody was used at 1/1,000 dilution and as a 2nd antibody, goat anti-rabbit IgG conjugated with Alexa Fluor 488 was used at 1/1,000 dilution (left panel). DNA was stained with DAPI (1 ug/ml) in TBS. The merged image was shown in the right panel.

Reference: This protein was described and used in the following publication.

1. Terabayashi T. et al. A coated vesicle-associated kinase of 104 kDa (CVAK104) induces lysosomal degradation of frizzled 5 (Fzd5). [J Biol Chem.](#) (2009) 284(39):26716-24. **WB, IP**