

## Anti-Cnd2 (*S. pombe*) antibody, rabbit serum

<b>Product code</b>	63-105
<b>Size</b>	100 µl
<b>Storage</b>	Store 4°C for short term For long term storage store at -20°C. Aliquot to avoid repeated freezing and thawing.
<b>Concentration</b>	N/A
<b>Buffer</b>	0.05% sodium azide
<b>Purity</b>	Rabbit antiserum
<b>Immunogen</b>	Recombinant GST-Cnd2 fusion protein expressed in <i>E. coli</i>
<b>Isotype</b>	Rabbit IgG
<b>Reactivity</b>	<i>S. pombe</i> Cnd2 protein. Not tested for other species
<b>Special notes</b>	N/A
<b>Application</b>	1. Western blotting (500 fold dilution) (Ref.1,2,3) 2. Immunofluorescent staining (Ref. 3) Not tested for other applications
<b>Background</b>	<p>Cnd2 protein is a regulatory subunit of the condensin complex, which is required for conversion of interphase chromatin into mitotic condensed chromosomes in <i>S. pombe</i>. The condensin complex also plays a role during interphase in processes of DNA repair and recombination.</p> <p>Although molecular mass of the Cdn2 protein of <i>S. pombe</i> from the DNA sequence is 83.2 kDa, it migrates on SDS-PAGE at a position equivalent to a 105 kDa protein (Ref. 2).</p>
<b>Data Link</b>	<a href="#">cnd2: pombe : GeneDB</a>
Please note: All products are FOR RESEARCH USE ONLY. NOT FOR USE IN DIAGNOSTIC PROCEDURES. NOT FOR MILITARY USE.	

Data Images: 63-105 Anti-Cnd2 (*S. pombe*) antibody, rabbit serum

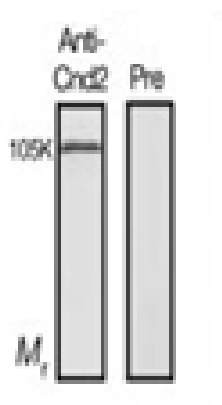


Fig.1 Identification of Cnd2 protein in the crude extract of *S. pombe* by western blotting with this antiserum.

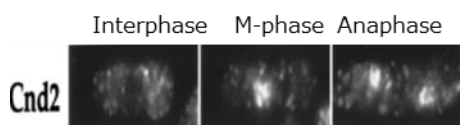


Fig.2 Detection of Cnd2 protein by immunofluorescent staining of *S. pombe* cell.

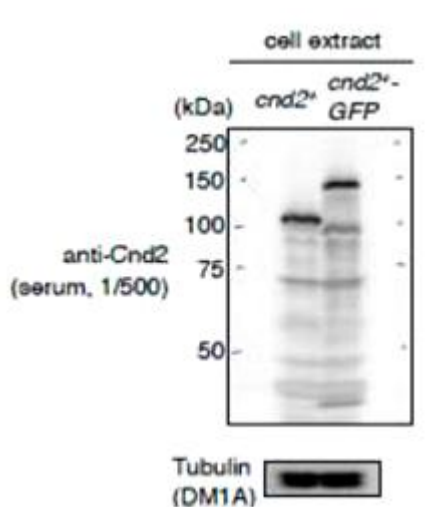


Fig.3 Identification of Cnd2 protein and Cnd2-GFP protein in crude cell extract by anti-Cnd2 antibody at 1/500 dilution.

**References:** This product has been used in the following publications.

1. Chen ES, Sutani T, Yanagida M. (2004) Cti1/C1D interacts with condensin SMC hinge and supports the DNA repair function of condensin. Proc Natl Acad Sci U S A. 101:8078-83. [PNAS Content](#)
2. Aono N, Sutani T, Tomonaga T, Mochida S, Yanagida M. (2002) Cnd2 has dual roles in mitotic condensation and interphase. Nature. 417:197-202. [pubmed/12000964](#)
3. Morishita J.(2001) Bir1/Cut17 moving from chromosome to spindle upon the loss of cohesion is

required for condensation, spindle elongation and repair. Genes Cells. 6:743-63. [Genes to Cells - Wiley Online Library](#)