

Anti- β tubulin (*S. pombe*) antibody, rabbit polyclonal

Product code	63-160
Size	100 μ g
Storage	-20°C
Concentration	1.0 mg/ml
Buffer	PBS ⁻ with 50% glycerol
Purity	Purified IgG fraction with Immunogen peptide from rabbit antiserum.
Immunogen	<i>S.pombe</i> β -tubulin C-terminal peptide, C-YEIEEEEKEPLEY-OH
Isotype	Rabbit IgG
Reactivity	<i>S. pombe</i> β tubulin protein. Not tested with other species.
Special notes	N/A
Application	1. Western blotting (1,000 fold dilution) 2. Immunofluorescence staining (assay dependent)
Background	Tubulin is the major constituent of microtubules. There are three members (α , β , γ) and two subtypes (δ , ϵ) in the tubulin family. Of these members, beta tubulin (449 aa, 51 kDa) is found at microtubule organizing centers (MTOC) such as the spindle poles or the centrosome, suggesting that it is involved in the minus-end nucleation of microtubule assembly during cell cycle.
Data Link	UniProtKB P05219 (TBB_SCHPO)
Please note: All products are FOR RESEARCH USE ONLY. NOT FOR USE IN DIAGNOSTIC PROCEDURES. NOT FOR MILITARY USE.	

Data Images: 63-160 Anti- β tubulin (*S. pombe*) antibody, rabbit polyclonal

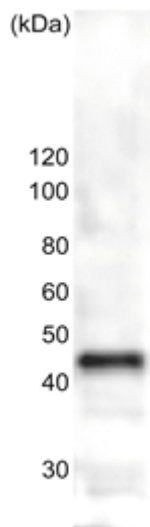


Fig. Western blot analysis of β tubulin in the whole cell extracts of *S. pombe* (10 μ g).
Anti- β tubulin antibody: 1,000 fold dilution

References: This antibody was made by Dr. H. Masuda and used in the following reference.

Fedyanina, O.S., et al "Tubulin heterodimers remain functional for one cell cycle after the inactivation of tubulin-folding cofactor D in fission yeast cells." *Yeast* 26,: 235-247(2009) [DOI:10.1002/yea.1663](https://doi.org/10.1002/yea.1663)**WB**