

Anti- γ -tubulin antibody, rabbit polyclonal

Product code	69-001
Size	100 μ g
Storage	-20°C
Concentration	1.0 mg/ml
Buffer	PBS ⁻ with 50% glycerol
Purity	Affinity-purified with immunogen.
Immunogen	Xenopus gamma-tubulin C-terminal peptide, C-EYHAATRPDYISWGTQDK conjugated with KLH
Isotype	Rabbit IgG
Reactivity	Xenopus, human and rodents.
Special notes	N/A
Application	1. Western blotting (200~ 1,000 fold dilution) 2. Immunofluorescent staining (1/100~1/200 dilution)
Background	Tubulin is the major constituent of microtubules. There are three members (α , β , γ) and two subtypes (δ , ϵ) in the tubulin family. Of these members, Gamma tubulin (451aa, 51KDa) is found at microtubule organizing centers (MTOC) such as the spindle poles or the centrosome, suggesting that it is involved in the minus-end nucleation of microtubule assembly during cell cycle.
Data Link	UniProtKB/Swiss-Prot P23330 (TBG1_XENLA)
Please note: All products are FOR RESEARCH USE ONLY. NOT FOR USE IN DIAGNOSTIC PROCEDURES. NOT FOR MILITARY USE.	

Data Images: 69-001 Anti- γ -tubulin antibody, rabbit polyclonal

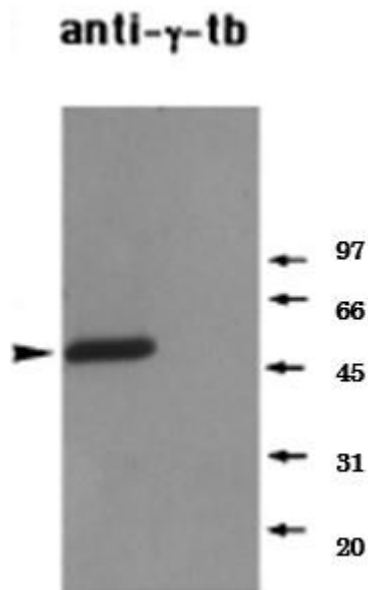


Fig. 1. Identification of endogenous γ -tubulin in a *Xenopus* mitotic extract by western blot. The primary antibody was used at 1/1,000 dilution.

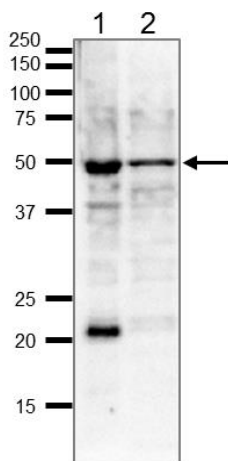


Fig.2 Identification of endogenous γ -tubulin in whole cell extracts by western blot. Samples (20 μ g) ; 1. HeLa cells 2. MCF7 cells
Blotting was done with wet system overnight at 15 V.
The antibody was used at 1/1,000 dilution.

γ -tubulin

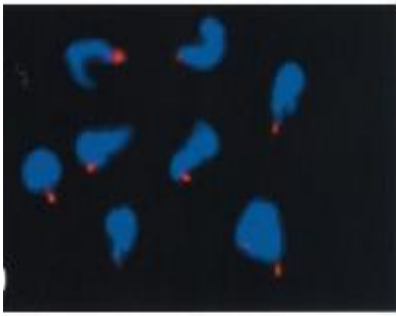


Fig.3 Immunofluorescent staining of γ -tubulin accumulated at sperm centriole in demembrated. *Xenopus* sperm heads which have been incubated in a *Xenopus* egg mitotic extract containing nocodazole. γ -Tubulin is stained red and sperm chromatin is stained with DAPI (blue). Anti- γ -tubulin (*Xenopus*) was used at 1/100 dilution.

anti- γ Tubulin antibody

DAPI

Merge

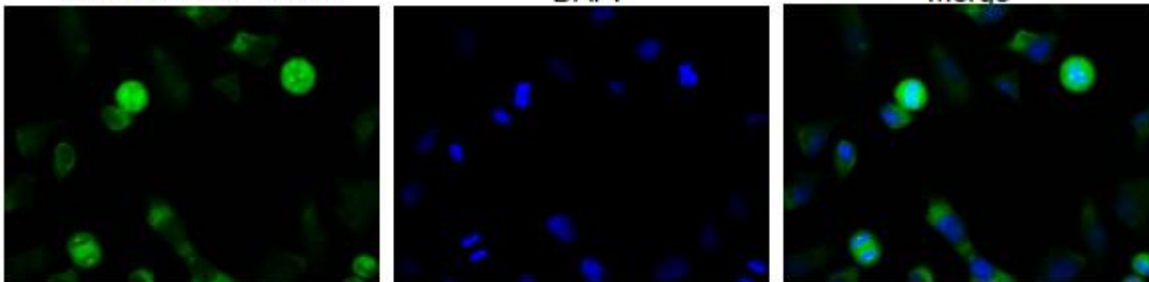


Fig.4 Immunofluorescence staining of γ -tubulin in HeLa cells by using this anti- γ -tubulin antibody. The first antibody was used at 1/100 dilution. As second antibody goat anti-rabbit IgG conjugated with Alexa Fluor 488 was used at 1/1,000 dilution.

References : This product is described and used in the following reference.

1. Masuda H *et al* Role of γ -tubulin in mitosis-specific microtubule nucleation from the *Schizosaccharomyces pombe* spindle pole body *J. Cell Sci.* 109,: 165-177(2000) PMID: [8834801](#) (WB)
2. Takeda S. et al. Identification of Ribonucleotide Reductase Protein R1 as an Activator of Microtubule Nucleation in *Xenopus*. *Mol Biol Cell* 11: 4173-4187 (2000) PMID: [11102516](#) (IF)