

Anti- α Tubulin antibody, mouse monoclonal (3A1)

Product code	70-102
Size	100 μ g
Storage	-20°C
Concentration	1.0 mg/ml
Buffer	PBS ⁻ with 50% glycerol
Purity	Purified IgG fraction with protein A from hybridoma cell culture medium.
Immunogen	Recombinant human alpha Tubulin (full-size)
Isotype	Mouse IgG1 κ
Reactivity	Human, Mouse, Rat, Hamster, Xenopus, C. elegans.
Special notes	N/A
Application	<ol style="list-style-type: none"> 1. Western blot (1/1000-1/2000) 2. Immunofluorescent staining (1/500) 3. ELISA (assay dependent)
Background	Tubulin is the major constituent of microtubules. It binds two moles of GTP, one at an exchangeable site on the beta chain and one at a non-exchangeable site on the alpha chain.
Data Link	UniProtKB: Q71U36 (human)
Please note: All products are FOR RESEARCH USE ONLY. NOT FOR USE IN DIAGNOSTIC PROCEDURES. NOT FOR MILITARY USE.	

Data Images: 70-102 Anti- α Tubulin antibody, mouse monoclonal (3A1)

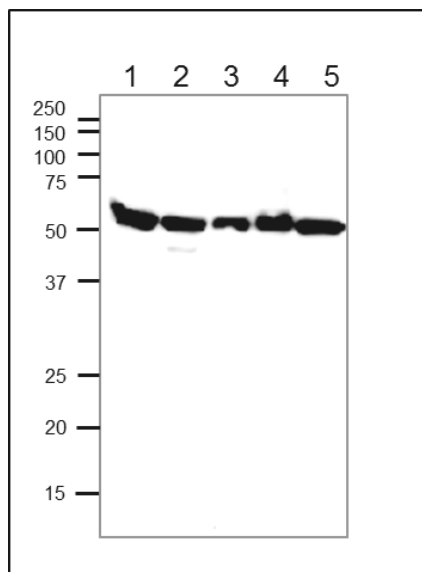


Fig.1 Western blot of alpha Tubulin in crude cell extracts

Samples

1. HeLa (human), 10 μ g
2. MCF7 (human), 13.5 μ g
3. CHO (hamster), 10 μ g
4. NIH3T3 (mouse), 10 μ g
5. B16 mouse melanoma, 11 μ g

The anti-alpha Tubulin antibody was used at 1/1,000 dilution and as the second antibody, HRP-conjugated goat anti-mouse IgG (ab205719) was used at 1/20,000 dilution.

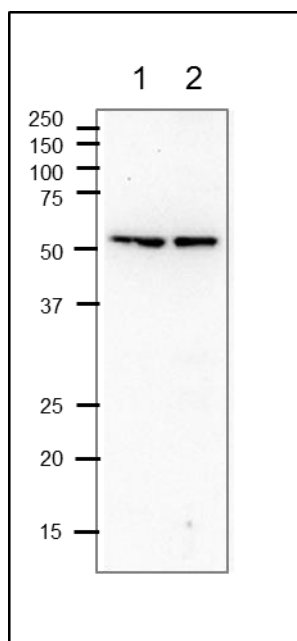


Fig.2 Western blot of alpha Tubulin in crude cell extracts

Samples

1.Xenopus egg, 70µg

2.C. elegans, 13.5µg

The anti-alpha Tubulin antibody was used at 1/1,000 dilution and as the second antibody, HRP-conjugated goat anti-mouse IgG (ab205719) was used at 1/20,000 dilution.

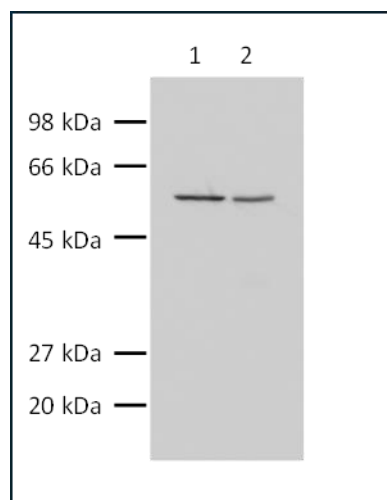


Fig.3 Western blot of alpha Tubulin in crude extracts

Samples

1.Hela cell, 10µg

2.Mouse liver extract, 10µg

The anti-alpha Tubulin antibody was used at 1/5,000 dilution and as the second antibody, HRP-conjugated goat anti-mouse IgG (ab205719) was used at 1/20,000 dilution.

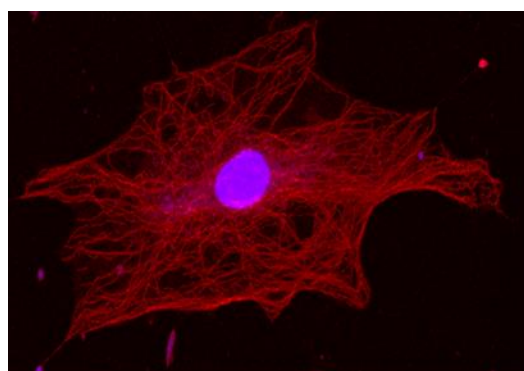


Fig.4 Immunofluorescence staining of alpha Tubulin

NIH3T3 cells were fixed with 4% formaldehyde, permeabilized in 0.1% Triton X-100 and then blocked in 1% in 0.1% PBS-Tween. The cells were incubated with the anti-alpha Tubulin antibody at 1/500 dilution followed by incubation with an Alexa546 rabbit anti-mouse IgG secondary antibody at 2 µg/ml (red). Nuclear DNA was labelled with DAPI.

Reference: This antibody has not been cited in publication yet.